

CATALOGUE NUMBER 6202.2  
20 JULY 1993

## THE LABOUR FORCE, VICTORIA, MAY 1993

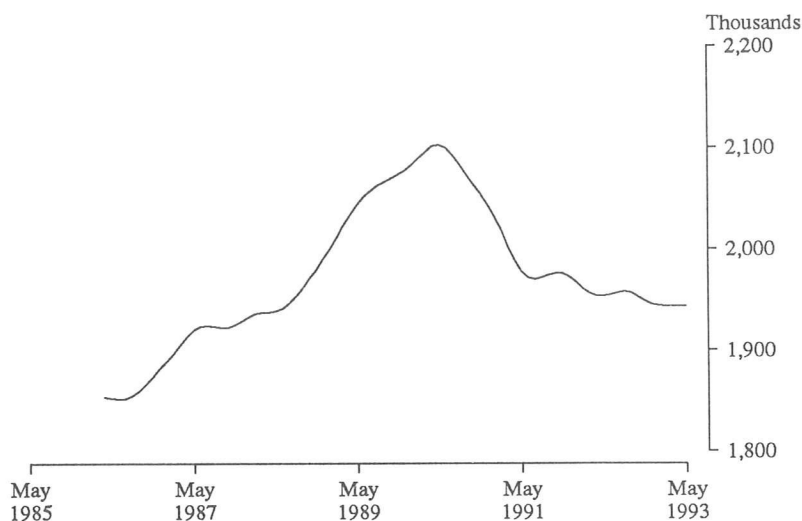
### SUMMARY OF FINDINGS

#### Employment

Provisional trend estimates of employment have remained steady from February 1993 having been gradually decreasing since August 1992.

The May 1993 seasonally adjusted estimate of employed persons in Victoria was 1,938,000, an increase of 13,400 since February 1993. Male employment rose by 5,400 to 1,113,800 and female employment rose by 7,900 to 824,100.

EMPLOYED PERSONS: TREND SERIES, VICTORIA



#### Unemployment

The trend estimate of the unemployment rate has remained relatively steady for the last twelve months.

The seasonally adjusted estimate of unemployed persons in Victoria for May 1993 was 271,800, an increase of 16,900 since February 1993. The seasonally adjusted estimate of the unemployment rate was 12.3 per cent a rise of 0.6 percentage points since February 1993.

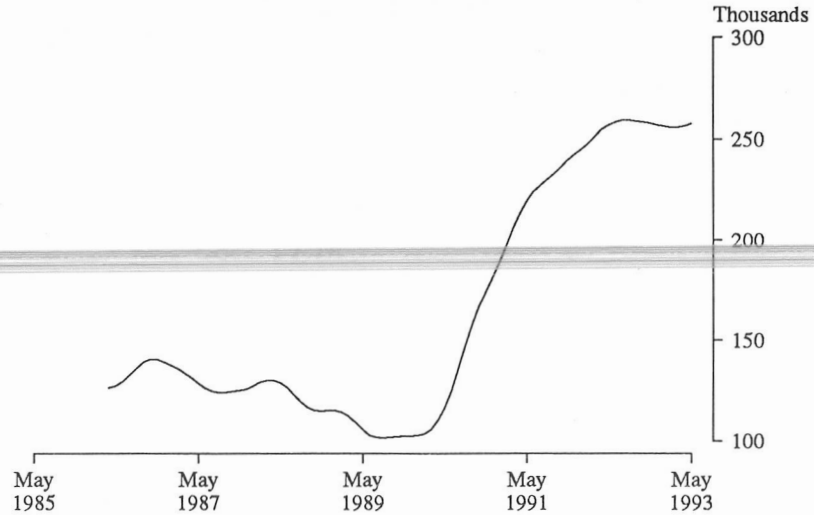
Of the 127,800 persons (original series) who were unemployed in May 1993 and who had had a full-time job for two weeks or more within the last two years (some 47 per cent of the unemployed), more than half reported their previous occupation as either tradespersons (30,600) or labourers and related workers (34,900). The majority (87 per cent) of these 65,500 were males.

Most females (68,500 or 65 per cent) who were unemployed in May 1993 had either not held a full-time job for two weeks or more within the last two years or were looking for their first job. Of the remaining 37,400 unemployed females, 17,900 reported their previous occupation as either clerk (7,900) or salesperson and personal service worker (10,000).

#### INQUIRIES

- for further information about statistics in this publication and the availability of related unpublished statistics, contact Chris Libreri on (03) 615 7057; or any ABS State office.
- for information about other ABS statistics and services please contact Information Services (03) 615 7000; or any ABS State office.

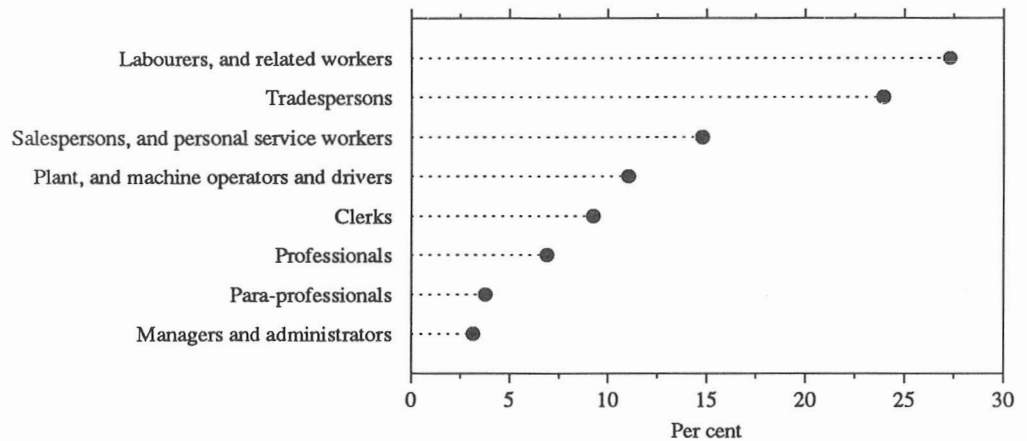
UNEMPLOYED PERSONS: TREND SERIES, VICTORIA



Regions

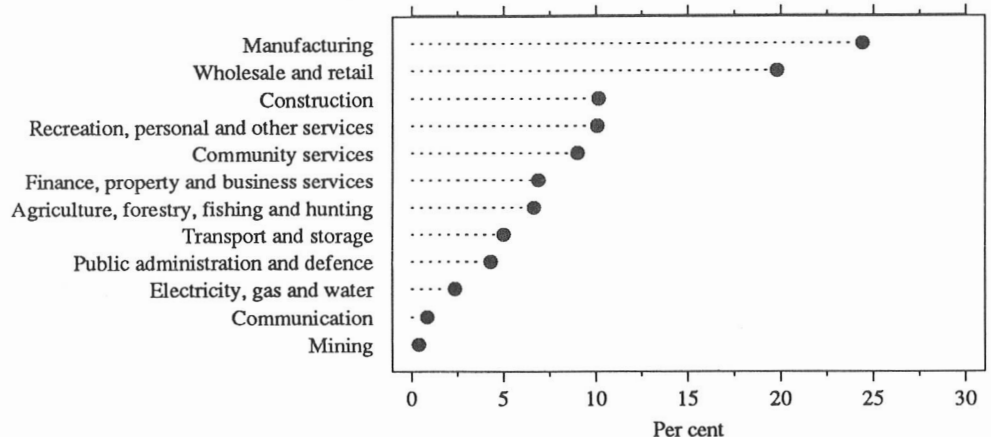
In May 1993, the regions within the Melbourne Major Statistical Region with the highest unemployment rates were Outer Western Melbourne, North Western Melbourne and North Eastern Melbourne with unemployment rates of 16.3 per cent, 15.6 per cent and 15.5 per cent, respectively. The region with the highest overall unemployment rate of 16.6 per cent was Central Highlands - Wimmera, All Gippsland had a rate of 15.9 per cent. The lowest unemployment rate recorded in any region in May 1993 was 6.2 per cent for Inner Eastern Melbourne.

DISTRIBUTION OF UNEMPLOYED PERSONS BY OCCUPATION OF LAST FULL-TIME JOB(a), VICTORIA, MAY 1993



(a) Full time job for two weeks or more within the last two years.

DISTRIBUTION OF UNEMPLOYED PERSONS BY INDUSTRY OF LAST FULL-TIME JOB(a), VICTORIA, MAY 1993



(a) Full time job for two weeks or more within the last two years.

## CONTENTS

Table		Page
	<b>Civilian population aged 15 years and over -</b>	
1	Labour force status, time series, original series	4
2	Labour force status, time series, seasonally adjusted series	6
3	Labour force status, time series, trend series	7
4	Labour force status, age, and attendance at an educational institution, May 1993	8
5	Labour force status, birthplace, and period of arrival in Australia, May 1993	9
6	Labour force status and family status, May 1993	10
7	Labour force status by regions, March 1993	12
8	Labour force status by regions, April 1993	14
9	Labour force status by regions, May 1993	16
10	Labour force status and age by regions, May 1993	18
	<b>Employed persons -</b>	
11	Industry by regions, May 1993	22
12	Occupation by regions, May 1993	24
13	Industry and occupation by age, May 1993	26
14	Average weekly hours worked by industry, and occupation, May 1993	27
15	Status of worker and hours worked, May 1993	28
	<b>Unemployed persons -</b>	
16	Industry and occupation of last job, May 1993	28
17	Duration of unemployment, May 1993	29
	<b>Explanatory notes</b>	
..	Explanatory notes	30
..	Glossary	37
A	Standard errors of level estimates, Victorian labour force regions, September 1992 onwards	38
B	Standard errors of month to month movements, Victorian labour force regions, January 1993 onwards	39
C	Standard errors of month to month movement estimates, Victoria	40
D	25 per cent Relative Standard Error cut off levels, States and Australia, September 1992 onwards	40
..	Statistical Local Area Composition of Statistical Regions	41
	<b>Maps</b>	
..	Victorian labour force regions, September 1992 onwards	42
..	Metropolitan labour force regions, September 1992 onwards	43
	<b>Charts</b>	
..	Employed persons, trend series, Victoria	1
..	Unemployment rate, trend series, Victoria	2
..	Distribution of unemployed persons by occupation of last full-time job, Victoria, May 1993	2
..	Distribution of unemployed persons by industry of last full-time job, Victoria, May 1993	2
..	Unemployment rates, age group by sex, Victoria, May 1993	8
..	Unemployment rate, time series, North Western Melbourne Region	11
..	Unemployment rate, time series, Outer Western Melbourne Region	11
..	Unemployment rate, time series, Inner Melbourne Region	11
..	Unemployment rate, time series, North Eastern Melbourne Region	11
..	Unemployment rate, time series, Inner Eastern Melbourne Region	11
..	Unemployment rate, time series, Southern Melbourne Region	11
..	Unemployment rate, time series, Outer Eastern Melbourne Region	11
..	Unemployment rates, metropolitan and ex-metropolitan areas by age group, Victoria, May 1993	13
..	Unemployment rates, metropolitan and ex-metropolitan areas by sex, Victoria, May 1993	15
..	Participation rates, metropolitan and ex-metropolitan areas by sex, Victoria, May 1993	17
..	Unemployment rates, Victorian labour force regions, May 1993	19

**TABLE 1. CIVILIAN POPULATION AGED 15 YEARS AND OVER BY  
LABOUR FORCE STATUS, VICTORIA: ORIGINAL SERIES**

Month	Employed		Unemployed			Labour force ('000)	Not in labour force ('000)	Civilian population 15 years and over ('000)	Unem- ployment rate (per cent)	Partici- pation rate (per cent)
	Full-time ('000)	Total ('000)	Full-time ('000)	Part-time ('000)	Total ('000)					
<b>MALES</b>										
1992 -										
March	1,005.8	1,124.8	146.4	13.2	159.6	1,284.4	434.9	1,719.3	12.4	74.7
April	1,004.1	1,125.6	138.2	13.7	151.9	1,277.5	442.9	1,720.4	11.9	74.3
May	1,001.7	1,124.6	145.9	10.6	156.5	1,281.1	440.4	1,721.4	12.2	74.4
June	1,009.4	1,137.1	138.9	9.9	148.9	1,286.0	436.5	1,722.6	11.6	74.7
July	1,014.8	1,135.2	143.7	12.0	155.6	1,290.8	433.0	1,723.9	12.1	74.9
August	997.5	1,125.3	137.8	12.6	150.4	1,275.6	449.5	1,725.2	11.8	73.9
September	1,005.6	1,134.2	137.3	12.4	149.6	1,283.8	442.7	1,726.5	11.7	74.4
October	1,004.9	1,129.5	133.3	16.7	150.0	1,279.5	447.9	1,727.4	11.7	74.1
November	1,001.3	1,115.3	144.6	13.4	158.0	1,273.2	455.0	1,728.3	12.4	73.7
December	1,021.0	1,135.9	139.4	17.9	157.4	1,293.2	435.9	1,729.1	12.2	74.8
1993 -										
January	999.7	1,110.6	160.2	12.2	172.4	1,283.0	447.3	1,730.3	13.4	74.1
February	1,005.8	1,108.9	156.6	14.4	171.0	1,280.0	451.5	1,731.5	13.4	73.9
March	1,010.8	1,129.2	144.5	18.6	163.1	1,292.4	440.3	1,732.7	12.6	74.6
April	1,006.7	1,118.9	139.0	17.1	156.1	1,275.0	458.2	1,733.2	12.2	73.6
May	1,003.3	1,114.8	150.5	18.4	168.9	1,283.7	450.0	1,733.7	13.2	74.0
<b>MARRIED FEMALES</b>										
1992 -										
March	273.5	503.5	31.5	12.2	43.7	547.2	472.1	1,019.4	8.0	53.7
April	260.4	494.0	34.0	9.5	43.5	537.5	485.8	1,023.4	8.1	52.5
May	257.8	494.2	35.4	9.6	44.9	539.1	482.6	1,021.7	8.3	52.8
June	256.2	499.0	31.5	11.0	42.6	541.6	478.1	1,019.7	7.9	53.1
July	265.8	511.4	29.0	9.8	38.8	550.2	471.0	1,021.2	7.0	53.9
August	271.1	511.1	26.5	8.9	35.5	546.6	478.7	1,025.4	6.5	53.3
September	275.1	504.4	26.8	13.4	40.2	544.6	471.4	1,016.0	7.4	53.6
October	268.8	500.5	25.5	12.0	37.6	538.0	487.9	1,025.9	7.0	52.4
November	272.3	509.9	26.0	12.9	38.8	548.8	482.0	1,030.8	7.1	53.2
December	271.9	504.9	29.4	14.4	43.8	548.7	483.7	1,032.3	8.0	53.1
1993 -										
January	252.1	475.6	25.0	11.1	36.1	511.7	523.3	1,035.0	7.1	49.4
February	258.2	489.2	30.4	17.0	47.4	536.6	498.5	1,035.1	8.8	51.8
March	274.9	514.1	30.3	12.9	43.1	557.2	480.9	1,038.1	7.7	53.7
April	269.5	504.9	29.5	10.0	39.6	544.4	495.1	1,039.5	7.3	52.4
May	273.9	511.8	30.3	10.7	41.0	552.8	487.5	1,040.3	7.4	53.1
<b>OTHER FEMALES</b>										
1992 -										
March	210.5	324.7	47.5	17.6	65.1	389.8	373.1	762.9	16.7	51.1
April	208.0	324.2	48.4	13.6	62.0	386.2	374.0	760.2	16.0	50.8
May	213.4	323.3	46.3	13.3	59.6	382.9	380.3	763.1	15.6	50.2
June	212.5	325.4	47.9	13.2	61.1	386.4	380.1	766.5	15.8	50.4
July	211.0	325.1	46.6	11.3	57.9	383.0	383.9	766.8	15.1	49.9
August	203.9	315.8	39.8	14.4	54.2	370.0	394.6	764.6	14.7	48.4
September	212.1	326.1	39.3	15.2	54.6	380.7	395.2	775.8	14.3	49.1
October	214.4	325.3	40.2	14.3	54.5	379.8	387.2	767.0	14.3	49.5
November	216.0	328.5	39.4	12.1	51.5	380.0	383.3	763.3	13.6	49.8
December	224.3	334.4	50.9	13.1	64.0	398.4	364.5	762.9	16.1	52.2
1993 -										
January	222.2	325.6	49.9	12.2	62.1	387.7	373.8	761.5	16.0	50.9
February	215.3	320.1	49.1	15.8	64.9	385.0	377.7	762.7	16.9	50.5
March	214.4	320.2	48.1	15.5	63.6	383.8	377.2	761.0	16.6	50.4
April	214.4	316.3	43.9	12.8	56.7	373.0	387.3	760.3	15.2	49.1
May	206.8	309.6	47.6	17.2	64.8	374.4	385.9	760.3	17.3	49.2

**TABLE 1. CIVILIAN POPULATION AGED 15 YEARS AND OVER BY LABOUR FORCE STATUS, VICTORIA: ORIGINAL SERIES - continued**

Month	Employed		Unemployed			Labour force ('000)	Not in labour force ('000)	Civilian population 15 years and over ('000)	Unemployment rate (per cent)	Participation rate (per cent)
	Full-time ('000)	Total ('000)	Full-time ('000)	Part-time ('000)	Total ('000)					
ALL FEMALES										
1992 -										
March	484.0	828.2	79.0	29.9	108.8	937.0	845.2	1,782.2	11.6	52.6
April	468.4	818.2	82.4	23.1	105.4	923.7	859.9	1,783.6	11.4	51.8
May	471.1	817.5	81.6	22.9	104.5	922.0	862.9	1,784.9	11.3	51.7
June	468.7	824.4	79.4	24.2	103.6	928.0	858.2	1,786.2	11.2	52.0
July	476.9	836.5	75.5	21.2	96.7	933.2	854.9	1,788.1	10.4	52.2
August	474.9	826.9	66.3	23.4	89.7	916.6	873.4	1,789.9	9.8	51.2
September	487.2	830.5	66.1	28.6	94.8	925.3	866.5	1,791.8	10.2	51.6
October	483.2	825.8	65.7	26.3	92.0	917.8	875.1	1,792.9	10.0	51.2
November	488.3	838.4	65.4	25.0	90.4	928.8	865.3	1,794.1	9.7	51.8
December	496.2	839.3	80.3	27.5	107.8	947.1	848.1	1,795.2	11.4	52.8
1993 -										
January	474.3	801.2	74.9	23.3	98.2	899.4	897.1	1,796.5	10.9	50.1
February	473.5	809.4	79.5	32.8	112.3	921.7	876.1	1,797.8	12.2	51.3
March	489.3	834.3	78.4	28.4	106.7	941.0	858.1	1,799.1	11.3	52.3
April	484.0	821.2	73.4	22.8	96.2	917.4	882.4	1,799.8	10.5	51.0
May	480.7	821.3	78.0	27.9	105.9	927.2	873.4	1,800.6	11.4	51.5
PERSONS										
1992 -										
March	1,489.8	1,953.0	225.3	43.1	268.4	2,221.4	1,280.1	3,501.5	12.1	63.4
April	1,472.5	1,943.8	220.6	36.8	257.4	2,201.2	1,302.7	3,503.9	11.7	62.8
May	1,472.8	1,942.1	227.5	33.5	261.0	2,203.1	1,303.2	3,506.3	11.8	62.8
June	1,478.1	1,961.5	218.3	34.2	252.5	2,214.0	1,294.8	3,508.8	11.4	63.1
July	1,491.6	1,971.7	219.2	33.1	252.3	2,224.0	1,287.9	3,511.9	11.3	63.3
August	1,472.4	1,952.2	204.1	36.0	240.0	2,192.2	1,322.9	3,515.1	10.9	62.4
September	1,492.8	1,964.7	203.4	41.0	244.4	2,209.1	1,309.2	3,518.3	11.1	62.8
October	1,488.1	1,955.3	199.0	43.0	242.0	2,197.3	1,323.1	3,520.3	11.0	62.4
November	1,489.6	1,953.7	210.0	38.3	248.4	2,202.0	1,320.3	3,522.3	11.3	62.5
December	1,517.2	1,975.2	219.7	45.4	265.1	2,240.3	1,284.0	3,524.4	11.8	63.6
1993 -										
January	1,474.0	1,911.8	235.1	35.5	270.6	2,182.4	1,344.4	3,526.8	12.4	61.9
February	1,479.2	1,918.3	236.1	47.2	283.3	2,201.6	1,327.7	3,529.3	12.9	62.4
March	1,500.1	1,963.5	222.8	47.0	269.8	2,233.4	1,298.4	3,531.8	12.1	63.2
April	1,490.7	1,940.1	212.4	39.9	252.4	2,192.4	1,340.6	3,533.0	11.5	62.1
May	1,484.0	1,936.1	228.5	46.3	274.8	2,210.9	1,323.4	3,534.3	12.4	62.6

**TABLE 2. CIVILIAN POPULATION AGED 15 YEARS AND OVER BY  
LABOUR FORCE STATUS, VICTORIA: SEASONALLY ADJUSTED SERIES**

<i>Month</i>	<i>Employed (<sup>'000</sup>)</i>	<i>Unemployed (<sup>'000</sup>)</i>	<i>Labour force (<sup>'000</sup>)</i>	<i>Unemployment rate (per cent)</i>	<i>Participation rate (per cent)</i>
MALES					
1992 -					
March	1,126.1	156.8	1,282.9	12.2	74.6
April	1,124.9	149.9	1,274.9	11.8	74.1
May	1,123.5	157.0	1,280.5	12.3	74.4
June	1,134.0	156.5	1,290.5	12.1	74.9
July	1,134.0	162.3	1,296.2	12.5	75.2
August	1,131.9	157.1	1,289.0	12.2	74.7
September	1,132.6	151.5	1,284.1	11.8	74.4
October	1,127.3	159.7	1,286.9	12.4	74.5
November	1,122.3	162.8	1,285.1	12.7	74.4
December	1,123.9	149.9	1,273.9	11.8	73.7
1993 -					
January	1,117.4	160.7	1,278.2	12.6	73.9
February	1,108.4	157.7	1,266.0	12.5	73.1
March	1,130.9	160.2	1,291.1	12.4	74.5
April	1,118.3	154.1	1,272.4	12.1	73.4
May	1,113.8	169.6	1,283.4	13.2	74.0
FEMALES					
1992 -					
March	830.3	98.3	928.6	10.6	52.1
April	821.6	97.9	919.4	10.6	51.6
May	820.1	101.1	921.2	11.0	51.6
June	826.6	105.2	931.9	11.3	52.2
July	834.7	102.5	937.2	10.9	52.4
August	826.4	100.4	926.8	10.8	51.8
September	819.8	99.2	919.0	10.8	51.3
October	823.9	100.8	924.7	10.9	51.6
November	832.8	100.7	933.5	10.8	52.0
December	823.4	105.6	929.0	11.4	51.7
1993 -					
January	819.5	96.2	915.7	10.5	51.0
February	816.2	97.3	913.5	10.6	50.8
March	836.9	96.7	933.5	10.4	51.9
April	824.9	89.5	914.4	9.8	50.8
May	824.1	102.2	926.3	11.0	51.4
PERSONS					
1992 -					
March	1,956.4	255.1	2,211.4	11.5	63.2
April	1,946.5	247.8	2,194.3	11.3	62.6
May	1,943.7	258.0	2,201.7	11.7	62.8
June	1,960.6	261.7	2,222.3	11.8	63.3
July	1,968.7	264.7	2,233.4	11.9	63.6
August	1,958.3	257.5	2,215.8	11.6	63.0
September	1,952.4	250.7	2,203.1	11.4	62.6
October	1,951.1	260.5	2,211.6	11.8	62.8
November	1,955.1	263.5	2,218.6	11.9	63.0
December	1,947.3	255.5	2,202.8	11.6	62.5
1993 -					
January	1,936.9	257.0	2,193.9	11.7	62.2
February	1,924.6	254.9	2,179.5	11.7	61.8
March	1,967.8	256.9	2,224.7	11.5	63.0
April	1,943.3	243.5	2,186.8	11.1	61.9
May	1,938.0	271.8	2,209.7	12.3	62.5

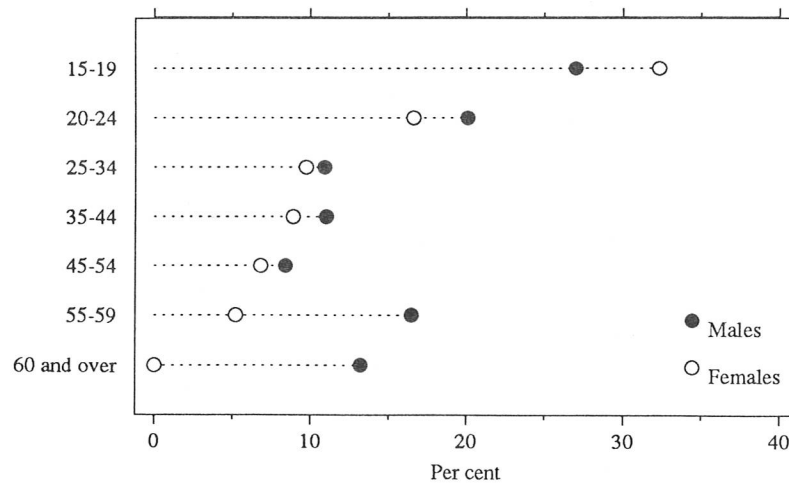
TABLE 3. CIVILIAN POPULATION AGED 15 YEARS AND OVER BY  
LABOUR FORCE STATUS, VICTORIA: TREND SERIES

Month	Employed ( <i>'000</i> )	Unemployed ( <i>'000</i> )	Labour force ( <i>'000</i> )	Unemployment rate (per cent)	Participation rate (per cent)
MALES					
1992 -					
March	1,126.9	151.8	1,278.7	11.9	74.4
April	1,127.1	154.3	1,281.4	12.0	74.5
May	1,128.4	155.9	1,284.3	12.1	74.6
June	1,130.1	157.1	1,287.2	12.2	74.7
July	1,131.6	157.7	1,289.2	12.2	74.8
August	1,132.1	157.7	1,289.8	12.2	74.8
September	1,130.6	157.5	1,288.1	12.2	74.6
October	1,127.6	157.4	1,284.9	12.2	74.4
November	1,124.2	157.1	1,281.3	12.3	74.1
December	1,121.4	157.1	1,278.6	12.3	73.9
1993 -					
January	1,119.8	157.5	1,277.3	12.3	73.8
February	1,118.9	158.2	1,277.1	12.4	73.8
March	1,118.4	159.3	1,277.6	12.5	73.7
April	1,117.9	160.5	1,278.5	12.6	73.8
May	1,117.6	162.0	1,279.6	12.7	73.8
FEMALES					
1992 -					
March	829.4	99.6	929.0	10.7	52.1
April	826.9	100.4	927.3	10.8	52.0
May	825.4	101.0	926.4	10.9	51.9
June	825.1	101.5	926.6	11.0	51.9
July	825.8	101.7	927.5	11.0	51.9
August	826.6	101.7	928.3	11.0	51.9
September	826.4	101.5	927.9	10.9	51.8
October	825.4	101.3	926.7	10.9	51.7
November	824.3	100.8	925.1	10.9	51.6
December	823.8	100.0	923.8	10.8	51.5
1993 -					
January	824.1	98.8	922.9	10.7	51.4
February	824.5	97.5	922.0	10.6	51.3
March	825.0	96.5	921.5	10.5	51.2
April	825.5	95.9	921.4	10.4	51.2
May	825.8	95.6	921.4	10.4	51.2
PERSONS					
1992 -					
March	1,956.3	251.4	2,207.7	11.4	63.0
April	1,954.0	254.7	2,208.7	11.5	63.0
May	1,953.8	257.0	2,210.8	11.6	63.1
June	1,955.2	258.6	2,213.8	11.7	63.1
July	1,957.3	259.4	2,216.7	11.7	63.1
August	1,958.7	259.4	2,218.1	11.7	63.1
September	1,957.0	259.0	2,216.0	11.7	63.0
October	1,953.0	258.7	2,211.6	11.7	62.8
November	1,948.5	257.9	2,206.3	11.7	62.6
December	1,945.2	257.1	2,202.4	11.7	62.5
1993 -					
January	1,943.9	256.4	2,200.2	11.7	62.4
February	1,943.4	255.8	2,199.2	11.6	62.3
March	1,943.4	255.7	2,199.1	11.6	62.3
April	1,943.4	256.4	2,199.8	11.7	62.3
May	1,943.4	257.7	2,201.0	11.7	62.3

**TABLE 4. CIVILIAN POPULATION AGED 15 YEARS AND OVER BY LABOUR FORCE STATUS, AGE, AND ATTENDANCE AT AN EDUCATIONAL INSTITUTION, VICTORIA, MAY 1993**

Particulars	Employed			Unemp- loyed ('000)	Labour force ('000)	Not in labour force ('000)	Unemp- loyment rate (per cent)	Partici- pation rate (per cent)
	Full- time ('000)	Part- time ('000)	Total ('000)					
Age (years) -								
15 - 19								
15 - 17	7.6	41.7	49.3	19.4	68.6	120.1	28.2	36.4
18 - 19	38.4	24.6	63.1	27.5	90.6	45.4	30.4	66.6
Attending school	*0.0	40.8	40.8	13.8	54.7	124.3	25.3	30.6
Not attending school -								
Left before 1991	13.4	*3.3	16.7	5.4	22.1	4.7	24.6	82.6
Left from 1991 to survey date	32.6	22.2	54.8	27.6	82.4	35.3	33.5	70.0
<b>Total aged 15 - 19 years</b>	<b>46.0</b>	<b>66.3</b>	<b>112.3</b>	<b>46.9</b>	<b>159.2</b>	<b>165.4</b>	<b>29.4</b>	<b>49.0</b>
Age (years) -								
20 - 24	202.7	50.1	252.9	57.4	310.3	67.5	18.5	82.1
25 - 34	424.9	95.6	520.5	60.6	581.1	141.9	10.4	80.4
35 - 44	387.9	111.9	499.8	55.9	555.6	117.4	10.1	82.6
45 - 54	300.9	78.5	379.4	31.8	411.1	111.7	7.7	78.6
55 and over	121.6	49.7	171.3	22.2	193.5	719.4	11.5	21.2
<b>Total all ages</b>	<b>1,484.0</b>	<b>452.1</b>	<b>1,936.1</b>	<b>274.8</b>	<b>2,210.9</b>	<b>1,323.4</b>	<b>12.4</b>	<b>62.6</b>
Attending tertiary educational institution full-time								
Age (years) -								
15 - 19	*0.5	15.9	16.3	6.8	23.1	32.8	29.5	41.4
20 - 24	*1.3	18.1	19.3	5.4	24.8	33.2	21.8	42.7

**UNEMPLOYMENT RATES BY AGE GROUP BY SEX,  
VICTORIA, MAY 1993**





**TABLE 5. CIVILIAN POPULATION AGED 15 YEARS AND OVER BY LABOUR FORCE STATUS, BIRTHPLACE, AND PERIOD OF ARRIVAL IN AUSTRALIA, VICTORIA, MAY 1993**

<i>Birthplace particulars</i>	<i>Employed</i>			<i>Unemp- loyed ('000)</i>	<i>Labour force ('000)</i>	<i>Not in labour force ('000)</i>	<i>Unemp- loyment rate (per cent)</i>	<i>Partici- pation rate (a) (per cent)</i>
	<i>Full- time ('000)</i>	<i>Part- time ('000)</i>	<i>Total ('000)</i>					
Born in Australia	1,064.2	353.1	1,417.3	186.4	1,603.6	829.0	11.6	65.9
Born outside Australia -								
Africa	15.7	*3.7	19.3	*2.9	22.2	6.9	*12.9	76.2
America	12.1	*2.5	14.6	*3.6	18.2	10.6	*19.8	63.1
Southeast Asia	40.8	9.0	49.8	14.2	63.9	39.1	22.2	62.1
Malaysia	11.8	*3.6	15.4	*1.6	17.0	13.1	*9.4	56.5
Viet Nam	15.6	*1.8	17.4	6.9	24.3	10.1	28.3	70.7
Other Southeast Asia	13.4	*3.6	17.0	5.7	22.7	15.9	25.3	58.8
Northeast Asia	19.5	4.8	24.3	*3.8	28.0	24.7	*13.4	53.1
Southern Asia	22.9	6.8	29.7	*3.7	33.4	10.6	*11.0	75.9
The Middle East and North Africa	16.0	*4.1	20.2	9.2	29.3	23.9	31.2	55.1
Europe	271.7	62.4	334.2	47.1	381.3	301.4	12.4	55.9
Germany	16.5	*3.1	19.6	*1.6	21.2	12.3	*7.5	63.3
Greece	25.3	*3.8	29.1	5.8	34.9	39.1	16.5	47.2
Italy	37.9	9.5	47.4	*4.5	52.0	67.9	8.8	43.3
Malta	11.9	*1.3	13.2	*3.9	17.2	10.0	*23.0	63.2
Netherlands	13.0	*3.2	16.2	*2.4	18.6	13.5	*13.1	57.9
Poland	7.4	*2.1	9.5	*3.5	12.9	14.5	*26.9	47.2
UK and Ireland	98.5	30.2	128.7	11.0	139.6	87.2	7.8	61.6
Yugoslavia (b)	35.3	*4.0	39.3	7.9	47.2	30.0	16.7	61.1
Other Europe	25.9	5.3	31.2	6.5	37.8	27.0	17.3	58.3
Oceania	17.7	5.2	22.9	*3.3	26.2	12.7	*12.5	67.4
New Zealand	17.2	4.7	21.9	*2.9	24.7	10.3	*11.6	70.6
Other Oceania	*0.5	*0.5	*1.0	*0.4	*1.4	*2.4	*27.7	*37.4
Main English speaking countries (c)	129.7	38.7	168.4	15.4	183.8	103.3	8.4	64.0
Other than main English speaking countries	290.1	60.3	350.4	73.0	423.5	328.8	17.3	56.3
Period of arrival -								
Before 1961	86.6	22.9	109.6	11.1	120.7	167.1	9.2	41.9
1961 - 1965	44.9	10.9	55.8	9.1	64.9	52.5	14.0	55.2
1966 - 1970	70.0	11.0	80.9	9.9	90.9	45.7	10.9	66.6
1971 - 1975	54.3	15.9	70.2	8.6	78.8	30.5	11.0	72.1
1976 - 1980	40.4	10.2	50.6	9.0	59.6	28.2	15.1	67.9
1981 - 1985	45.4	8.8	54.2	13.7	68.0	27.6	20.2	71.1
1986 - 1990	67.7	15.4	83.2	18.9	102.0	52.6	18.5	66.0
1991 to survey date	10.5	*3.8	14.3	8.0	22.3	27.9	35.8	44.5
<b>Total overseas born</b>	<b>419.8</b>	<b>99.0</b>	<b>518.8</b>	<b>88.4</b>	<b>607.2</b>	<b>432.0</b>	<b>14.6</b>	<b>58.4</b>

(a) Because it is not practicable to ascertain the birthplace of persons in institutions (who are classified as 'not in the labour force'), labour force participation rates for persons classified by birthplace are calculated by using population estimates which exclude those in institutions.

(b) Includes Yugoslavia and former Yugoslav Republics. (c) Comprises Canada, New Zealand, South Africa, United Kingdom and Ireland, United States of America.

**TABLE 6. CIVILIAN POPULATION AGED 15 YEARS AND OVER BY LABOUR FORCE STATUS AND FAMILY STATUS, VICTORIA, MAY 1993**

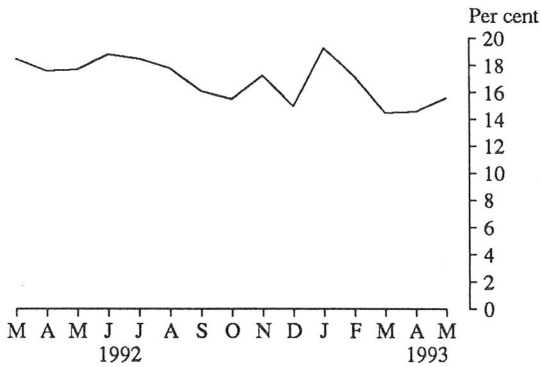
Family status	Employed			Unemp- loyed ( <sup>'000</sup> )	Labour force ( <sup>'000</sup> )	Not in labour force ( <sup>'000</sup> )	Civilian popu- lation and over ( <sup>'000</sup> )	Unemp- loyment rate (per cent)	Partici- pation rate (per cent)
	Full- time ( <sup>'000</sup> )	Part- time ( <sup>'000</sup> )	Total ( <sup>'000</sup> )						
<b>MALES</b>									
Member of a family	837.7	89.9	927.6	134.9	1,062.6	338.3	1,400.9	12.7	75.9
Husband or wife	669.2	41.7	710.8	71.9	782.7	235.2	1,017.9	9.2	76.9
With dependent children (a)	424.9	18.8	443.7	46.2	489.9	33.1	523.0	9.4	93.7
Without dependent children (a)	244.3	22.9	267.2	25.6	292.8	202.1	494.9	8.8	59.2
Sole parent	13.5	*1.9	15.4	*1.8	17.2	6.1	23.3	*10.4	73.7
With dependent children (a)	8.3	*1.9	10.2	*1.0	11.2	*2.4	13.7	*9.0	82.2
Without dependent children (a)	5.2	*0.0	5.2	*0.8	5.9	*3.7	9.6	*12.9	61.7
Other family head	*3.5	*0.5	*4.0	*1.1	5.1	*1.6	6.7	*21.8	76.3
Child of family head attending education(b)	*0.7	29.5	30.2	9.7	39.9	73.7	113.5	24.3	35.1
Other child of family head aged 15 and over	142.5	15.2	157.7	46.6	204.3	12.0	216.4	22.8	94.4
Other relative of family head attending education(b)	*0.0	*0.5	*0.5	*0.2	*0.8	*1.8	*2.6	*31.0	*30.6
Other relative of family head aged 15 and over	8.4	*0.6	9.0	*3.6	12.6	7.9	20.5	*28.7	61.3
Not a member of a family	137.7	15.9	153.7	29.7	183.4	70.5	253.9	16.2	72.2
Living alone	64.7	6.3	71.1	12.9	84.0	51.8	135.7	15.3	61.8
Not living alone	73.0	9.6	82.6	16.8	99.4	18.7	118.1	16.9	84.2
Not family coded	27.8	5.6	33.4	*4.3	37.7	41.3	79.0	*11.3	47.8
Total	1,003.3	111.5	1,114.8	168.9	1,283.7	450.0	1,733.7	13.2	74.0
<b>FEMALES</b>									
Member of a family	378.6	302.7	681.4	88.1	769.4	654.7	1,424.2	11.4	54.0
Husband or wife	264.4	231.9	496.2	39.2	535.4	467.9	1,003.3	7.3	53.4
With dependent children (a)	123.2	163.9	287.2	27.0	314.1	195.8	509.9	8.6	61.6
Without dependent children (a)	141.1	67.9	209.1	12.2	221.3	272.1	493.4	5.5	44.8
Sole parent	29.8	19.6	49.4	13.2	62.6	73.5	136.2	21.1	46.0
With dependent children (a)	17.8	17.0	34.8	11.0	45.8	45.0	90.8	24.1	50.4
Without dependent children (a)	12.0	*2.6	14.6	*2.2	16.8	28.5	45.3	*13.1	37.1
Other family head	*4.2	*0.6	4.8	*0.2	5.0	5.0	10.0	*4.8	50.3
Child of family head attending education(b)	*0.7	35.1	35.9	11.5	47.4	74.6	122.0	24.3	38.9
Other child of family head aged 15 and over	70.6	14.5	85.2	20.7	105.8	13.9	119.7	19.5	88.4
Other relative of family head attending education(b)	*0.0	*0.0	*0.0	*1.0	*1.0	*3.1	*4.1	*100.0	*23.8
Other relative of family head aged 15 and over	8.8	*1.0	9.9	*2.3	12.2	16.8	29.0	*18.8	42.0
Not a member of a family	82.7	27.7	110.4	13.3	123.7	147.4	271.1	10.7	45.6
Living alone	38.2	11.1	49.3	*4.3	53.6	131.1	184.7	*8.0	29.0
Not living alone	44.5	16.6	61.1	9.0	70.1	16.3	86.4	12.9	81.2
Not family coded	19.4	10.2	29.5	*4.5	34.0	71.3	105.3	*13.2	32.3
Total	480.7	340.6	821.3	105.9	927.2	873.4	1,800.6	11.4	51.5
<b>PERSONS</b>									
Member of a family	1,216.3	392.7	1,609.0	223.0	1,832.0	993.0	2,825.1	12.2	64.8
Husband or wife	933.5	273.5	1,207.1	111.1	1,318.1	703.0	2,021.1	8.4	65.2
With dependent children (a)	548.1	182.7	730.8	73.2	804.0	228.8	1,032.9	9.1	77.8
Without dependent children (a)	385.4	90.8	476.2	37.9	514.1	474.2	988.3	7.4	52.0
Sole parent	43.3	21.5	64.8	15.0	79.8	79.7	159.5	18.8	50.0
With dependent children (a)	26.1	18.9	45.0	12.0	57.0	47.5	104.5	21.1	54.6
Without dependent children (a)	17.2	*2.6	19.8	*3.0	22.8	32.2	55.0	*13.0	41.4
Other family head	7.7	*1.1	8.8	*1.4	10.2	6.6	16.8	*13.4	60.8
Child of family head attending education(b)	*1.5	64.6	66.1	21.2	87.3	148.2	235.5	24.3	37.1
Other child of family head aged 15 and over	213.2	29.7	242.9	67.3	310.2	25.9	336.1	21.7	92.3
Other relative of family head attending education(b)	*0.0	*0.5	*0.5	*1.2	*1.8	4.9	6.6	*68.9	*26.4
Other relative of family head aged 15 and over	17.2	*1.6	18.8	5.9	24.7	24.8	49.5	23.8	50.0
Not a member of a family	220.5	43.6	264.1	43.0	307.1	217.9	525.0	14.0	58.5
Living alone	102.9	17.5	120.4	17.2	137.5	182.9	320.5	12.5	42.9
Not living alone	117.5	26.2	143.7	25.8	169.5	34.9	204.5	15.2	82.9
Not family coded	47.2	15.8	63.0	8.8	71.8	112.5	184.3	12.2	38.9
Total	1,484.0	452.1	1,936.1	274.8	2,210.9	1,323.4	3,534.3	12.4	62.6

(a) Dependent children are defined as those who are usually resident in the household and: Aged 0 to 14 or; aged 15 to 19 and attending school full time or; aged 15 to 25 and attending tertiary education full time. (b) Aged 15 to 19 and attending school full time or aged 15 to 25 and attending tertiary education full time.

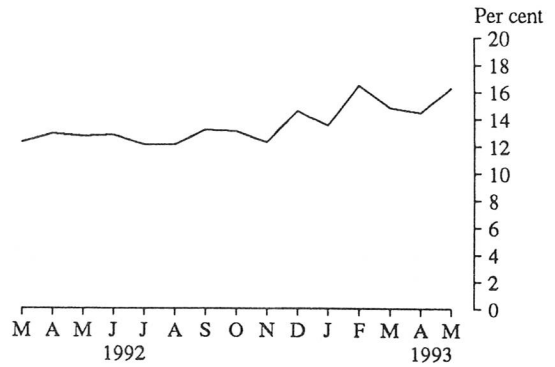
MELBOURNE MSR LABOUR FORCE REGIONS

(UNEMPLOYMENT RATE)

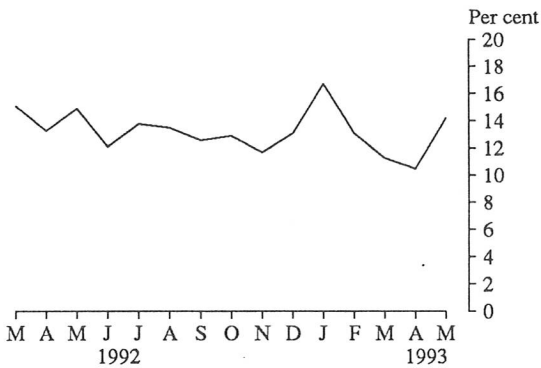
NORTH WESTERN MELBOURNE



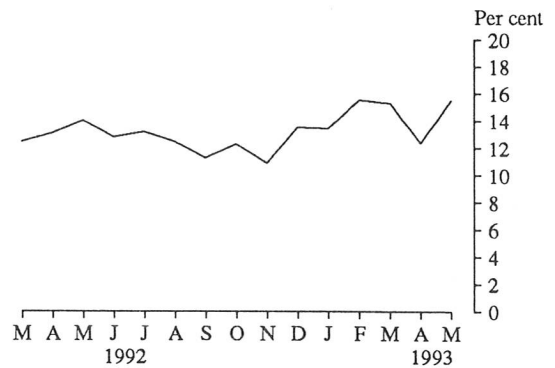
OUTER WESTERN MELBOURNE



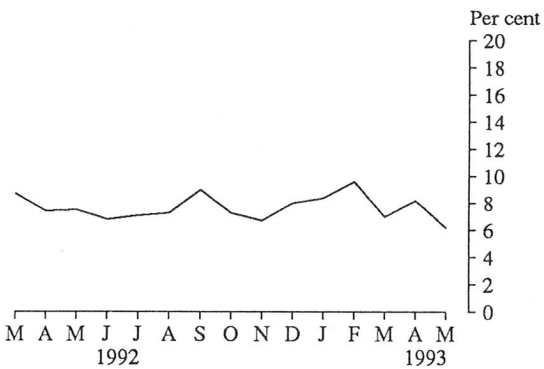
INNER MELBOURNE



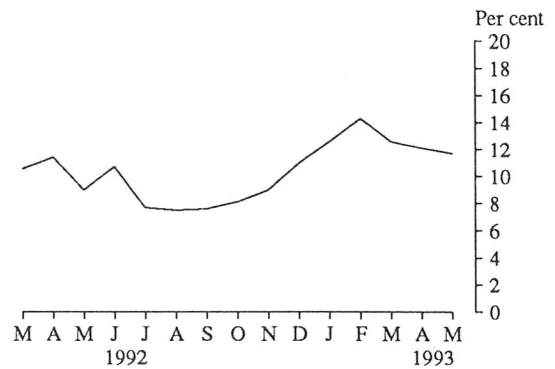
NORTH EASTERN MELBOURNE



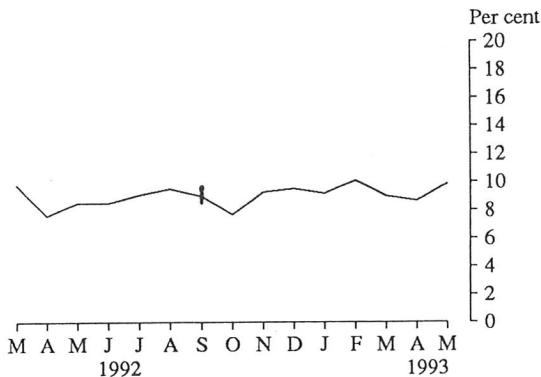
INNER EASTERN MELBOURNE



SOUTHERN MELBOURNE



OUTER EASTERN MELBOURNE



From September 1992 the Outer Eastern Melbourne region was re-defined such that the population increased by approximately 3.5 per cent.

TABLE 7. CIVILIAN POPULATION AGED 15 YEARS AND OVER BY LABOUR FORCE STATUS,  
VICTORIAN REGIONS, MARCH 1993

Region	Employed			Unemp- loyed ( <i>'000</i> )	Labour force ( <i>'000</i> )	Not in labour force ( <i>'000</i> )	Unemp- loyment rate (per cent)	Partici- pation rate (per cent)
	Full- time ( <i>'000</i> )	Part- time ( <i>'000</i> )	Total ( <i>'000</i> )					
MALES								
Melbourne MSR-	732.4	82.9	815.3	113.6	928.9	311.5	12.2	74.9
North Western Melbourne	56.0	5.2	61.2	13.7	74.9	23.9	18.3	75.8
Outer Western Melbourne	109.9	5.6	115.4	19.9	135.4	50.6	14.7	72.8
Inner Melbourne	46.7	8.1	54.8	8.0	62.7	26.6	12.7	70.2
North Eastern Melbourne	89.4	11.4	100.8	18.4	119.2	45.4	15.5	72.4
Inner Eastern Melbourne	101.9	16.0	117.9	8.7	126.6	44.5	6.9	74.0
Southern Melbourne	83.2	10.4	93.6	12.2	105.7	33.3	11.5	76.0
Outer Eastern Melbourne	120.9	14.7	135.6	14.7	150.3	38.5	9.8	79.6
South Eastern Melbourne	84.7	6.1	90.8	11.4	102.2	29.6	11.2	77.5
Mornington Peninsula	39.8	5.5	45.3	6.6	51.9	19.0	12.7	73.2
Balance of Victoria MSR-	278.5	35.5	313.9	49.5	363.5	128.8	13.6	73.8
Barwon-Western District	75.8	11.4	87.2	13.2	100.4	37.2	13.1	73.0
Central Highlands-Wimmera	36.5	*4.5	41.0	10.7	51.6	22.6	20.6	69.5
Loddon-Campaspe-Mallee	62.5	4.8	67.3	12.5	79.9	24.3	15.7	76.6
Goulburn-Ovens-Murray	57.4	7.2	64.6	5.4	70.0	17.1	7.7	80.4
All Gippsland	46.4	7.5	53.8	7.8	61.6	27.6	12.6	69.1
<b>Total</b>	<b>1,010.8</b>	<b>118.4</b>	<b>1,129.2</b>	<b>163.1</b>	<b>1,292.4</b>	<b>440.3</b>	<b>12.6</b>	<b>74.6</b>
MARRIED FEMALES								
Melbourne MSR-	201.3	163.7	365.0	31.8	396.8	338.0	8.0	54.0
North Western Melbourne	14.1	11.1	25.2	*2.8	28.0	29.4	*10.0	48.8
Outer Western Melbourne	35.0	19.8	54.8	5.9	60.7	56.0	9.7	52.0
Inner Melbourne	13.7	5.3	19.0	*2.1	21.1	11.7	*9.8	64.2
North Eastern Melbourne	27.0	17.3	44.3	4.9	49.2	47.0	9.9	51.2
Inner Eastern Melbourne	24.6	25.4	50.0	*2.9	52.9	49.7	*5.4	51.5
Southern Melbourne	19.1	17.9	37.1	4.8	41.9	37.3	11.5	52.9
Outer Eastern Melbourne	32.0	31.3	63.3	4.4	67.8	49.3	6.6	57.9
South Eastern Melbourne	24.4	23.3	47.6	*2.7	50.3	36.1	*5.3	58.2
Mornington Peninsula	11.3	12.4	23.7	*1.3	25.0	21.5	*5.4	53.8
Balance of Victoria MSR-	73.6	75.5	149.1	11.4	160.4	142.8	7.1	52.9
Barwon-Western District	18.4	20.1	38.4	*1.8	40.2	42.7	*4.4	48.5
Central Highlands-Wimmera	9.6	7.5	17.1	*2.4	19.5	22.1	*12.5	46.9
Loddon-Campaspe-Mallee	17.2	13.1	30.3	*2.4	32.6	29.5	*7.2	52.5
Goulburn-Ovens-Murray	17.6	20.8	38.4	*2.9	41.3	21.1	*7.0	66.2
All Gippsland	10.8	14.1	24.9	*1.9	26.8	27.5	*7.1	49.3
<b>Total</b>	<b>274.9</b>	<b>239.2</b>	<b>514.1</b>	<b>43.1</b>	<b>557.2</b>	<b>480.9</b>	<b>7.7</b>	<b>53.7</b>
ALL FEMALES								
Melbourne MSR-	373.4	244.1	617.5	75.3	692.8	603.1	10.9	53.5
North Western Melbourne	33.1	18.3	51.4	5.4	56.8	52.7	9.5	51.8
Outer Western Melbourne	51.9	29.4	81.3	14.2	95.5	94.6	14.9	50.2
Inner Melbourne	38.8	14.9	53.8	5.8	59.6	38.4	9.8	60.8
North Eastern Melbourne	47.5	26.8	74.3	13.3	87.6	80.3	15.2	52.2
Inner Eastern Melbourne	49.6	38.2	87.8	6.7	94.6	85.9	7.1	52.4
Southern Melbourne	37.9	26.0	63.8	10.5	74.3	70.2	14.1	51.4
Outer Eastern Melbourne	57.4	45.4	102.8	8.9	111.7	82.9	8.0	57.4
South Eastern Melbourne	39.0	29.5	68.4	6.7	75.1	58.3	8.9	56.3
Mornington Peninsula	18.2	15.7	33.9	3.8	37.7	39.6	10.0	48.7
Balance of Victoria MSR-	115.9	100.9	216.8	31.4	248.2	255.0	12.6	49.3
Barwon-Western District	28.8	29.1	57.9	8.0	65.9	73.4	12.1	47.3
Central Highlands-Wimmera	15.4	10.5	25.9	6.0	31.9	41.8	18.8	43.3
Loddon-Campaspe-Mallee	27.3	18.1	45.5	7.2	52.7	53.7	13.7	49.5
Goulburn-Ovens-Murray	25.4	24.0	49.4	4.2	53.7	37.2	7.9	59.0
All Gippsland	19.0	19.2	38.1	5.9	44.0	48.8	13.4	47.4
<b>Total</b>	<b>489.3</b>	<b>345.0</b>	<b>834.3</b>	<b>106.7</b>	<b>941.0</b>	<b>858.1</b>	<b>11.3</b>	<b>52.3</b>

**TABLE 7. CIVILIAN POPULATION AGED 15 YEARS AND OVER BY LABOUR FORCE STATUS, VICTORIAN REGIONS, MARCH 1993 - *continued***

Region	Employed			Unemp- loyed ( <i>'000</i> )	Labour force ( <i>'000</i> )	Not in labour force ( <i>'000</i> )	Unemp- loyment rate (per cent)	Partici- pation rate (per cent)
	Full- time ( <i>'000</i> )	Part- time ( <i>'000</i> )	Total ( <i>'000</i> )					
PERSONS								
Melbourne MSR-	1,105.8	327.0	1,432.8	188.9	1,621.7	914.6	11.6	63.9
North Western Melbourne	89.0	23.5	112.5	19.1	131.6	76.6	14.5	63.2
Outer Western Melbourne	161.8	35.0	196.8	34.1	230.9	145.2	14.8	61.4
Inner Melbourne	85.5	23.0	108.5	13.8	122.3	65.1	11.3	65.3
North Eastern Melbourne	136.9	38.2	175.1	31.7	206.8	125.7	15.3	62.2
Inner Eastern Melbourne	151.5	54.2	205.7	15.5	221.2	130.4	7.0	62.9
Southern Melbourne	121.1	36.3	157.4	22.7	180.0	103.6	12.6	63.5
Outer Eastern Melbourne	178.3	60.1	238.4	23.5	262.0	121.5	9.0	68.3
South Eastern Melbourne	123.7	35.6	159.2	18.1	177.3	87.9	10.2	66.9
Mornington Peninsula	58.0	21.2	79.2	10.4	89.6	58.7	11.6	60.4
Balance of Victoria MSR-	394.4	136.4	530.7	80.9	611.6	383.8	13.2	61.4
Barwon-Western District	104.5	40.5	145.1	21.2	166.2	110.5	12.7	60.1
Central Highlands-Wimmera	51.9	15.0	66.9	16.7	83.6	64.5	19.9	56.4
Loddon-Campaspe-Mallee	89.8	23.0	112.8	19.8	132.5	78.1	14.9	62.9
Goulburn-Ovens-Murray	82.8	31.2	114.0	9.6	123.7	54.3	7.8	69.5
All Gippsland	65.3	26.7	92.0	13.7	105.7	76.4	13.0	58.0
<b>Total</b>	<b>1,500.1</b>	<b>463.4</b>	<b>1,963.5</b>	<b>269.8</b>	<b>2,233.4</b>	<b>1,298.4</b>	<b>12.1</b>	<b>63.2</b>

**UNEMPLOYMENT RATES: METROPOLITAN AND EX-METROPOLITAN AREAS BY AGE GROUP, VICTORIA, MAY 1993**

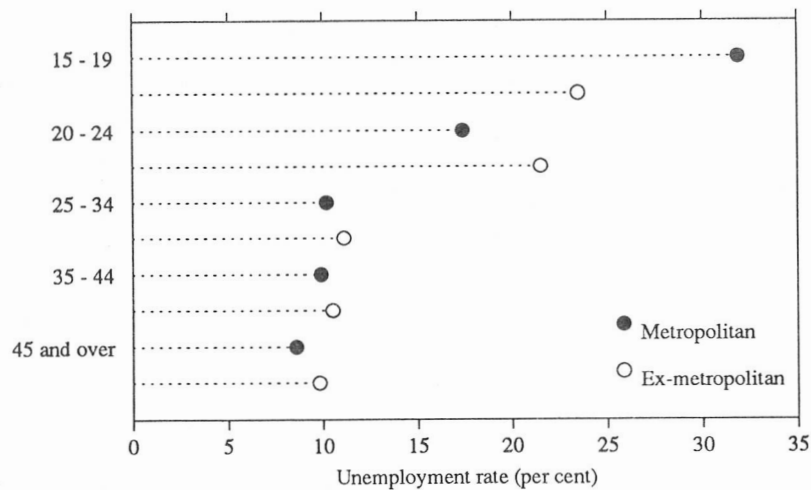


TABLE 8. CIVILIAN POPULATION AGED 15 YEARS AND OVER BY LABOUR FORCE STATUS,  
VICTORIAN REGIONS, APRIL 1993

Region	Employed			Unemp- loyed ( <sup>'000</sup> )	Labour force ( <sup>'000</sup> )	Not in labour force ( <sup>'000</sup> )	Unemp- loyment rate (per cent)	Partici- pation rate (per cent)
	Full- time ( <sup>'000</sup> )	Part- time ( <sup>'000</sup> )	Total ( <sup>'000</sup> )					
MALES								
Melbourne MSR-	727.3	79.7	807.0	111.1	918.1	322.4	12.1	74.0
North Western Melbourne	55.1	4.7	59.7	11.2	70.9	26.3	15.8	73.0
Outer Western Melbourne	109.4	7.4	116.8	20.8	137.6	49.4	15.1	73.6
Inner Melbourne	49.3	6.6	55.9	10.1	66.0	24.5	15.3	72.9
North Eastern Melbourne	95.5	10.8	106.3	15.0	121.2	46.1	12.3	72.5
Inner Eastern Melbourne	100.9	13.7	114.6	10.3	124.8	46.1	8.2	73.0
Southern Melbourne	74.8	12.9	87.8	11.0	98.8	38.3	11.2	72.0
Outer Eastern Melbourne	118.1	14.3	132.3	14.3	146.7	38.7	9.8	79.1
South Eastern Melbourne	84.8	5.3	90.1	10.4	100.5	33.1	10.3	75.2
Mornington Peninsula	39.4	4.1	43.5	8.1	51.6	19.9	15.7	72.2
Balance of Victoria MSR-	279.4	32.5	311.9	45.0	356.8	135.8	12.6	72.4
Barwon-Western District	81.6	9.1	90.7	12.0	102.7	41.6	11.7	71.1
Central Highlands-Wimmera	36.9	*4.2	41.1	9.5	50.6	23.2	18.8	68.5
Loddon-Campaspe-Mallee	56.1	4.3	60.4	11.5	71.9	23.4	16.0	75.4
Goulburn-Ovens-Murray	56.8	6.9	63.7	4.9	68.7	18.2	7.2	79.1
All Gippsland	47.9	8.0	55.9	7.1	63.0	29.3	11.2	68.2
<b>Total</b>	<b>1,006.7</b>	<b>112.2</b>	<b>1,118.9</b>	<b>156.1</b>	<b>1,275.0</b>	<b>458.2</b>	<b>12.2</b>	<b>73.6</b>
MARRIED FEMALES								
Melbourne MSR-	201.1	158.6	359.7	27.7	387.4	343.4	7.2	53.0
North Western Melbourne	14.2	9.3	23.5	3.4	26.9	29.3	12.7	47.8
Outer Western Melbourne	36.0	18.9	54.8	5.8	60.6	56.4	9.5	51.8
Inner Melbourne	14.0	5.7	19.6	*0.5	20.2	12.1	*2.5	62.5
North Eastern Melbourne	25.1	17.6	42.6	*2.6	45.3	52.3	*5.8	46.4
Inner Eastern Melbourne	23.2	25.5	48.8	3.5	52.3	47.9	6.7	52.2
Southern Melbourne	22.1	17.6	39.7	4.6	44.3	38.7	10.3	53.4
Outer Eastern Melbourne	32.8	28.8	61.6	3.9	65.5	48.2	6.0	57.6
South Eastern Melbourne	23.6	23.8	47.4	*3.2	50.5	34.5	*6.2	59.4
Mornington Peninsula	10.2	11.4	21.6	*0.3	21.8	24.0	*1.2	47.6
Balance of Victoria MSR-	68.5	76.7	145.2	11.9	157.1	151.7	7.5	50.9
Barwon-Western District	18.7	20.0	38.7	*3.7	42.4	44.8	*8.7	48.6
Central Highlands-Wimmera	9.8	7.3	17.1	*2.5	19.6	23.5	*12.8	45.5
Loddon-Campaspe-Mallee	14.7	14.5	29.2	*2.3	31.4	27.4	*7.2	53.4
Goulburn-Ovens-Murray	14.2	21.7	36.0	*2.0	38.0	26.1	*5.3	59.3
All Gippsland	11.1	13.2	24.3	*1.4	25.7	30.0	*5.5	46.1
<b>Total</b>	<b>269.5</b>	<b>235.3</b>	<b>504.9</b>	<b>39.6</b>	<b>544.4</b>	<b>495.1</b>	<b>7.3</b>	<b>52.4</b>
ALL FEMALES								
Melbourne MSR-	373.5	238.8	612.3	67.7	680.1	616.2	10.0	52.5
North Western Melbourne	33.8	15.2	49.1	7.5	56.5	55.3	13.2	50.5
Outer Western Melbourne	53.7	29.8	83.6	13.1	96.7	94.9	13.5	50.5
Inner Melbourne	39.7	17.9	57.6	*3.3	60.9	39.3	*5.4	60.8
North Eastern Melbourne	46.8	26.8	73.6	10.5	84.1	86.7	12.4	49.2
Inner Eastern Melbourne	48.6	36.7	85.3	7.7	93.0	88.2	8.3	51.3
Southern Melbourne	38.6	25.4	64.1	9.8	73.9	74.8	13.3	49.7
Outer Eastern Melbourne	58.1	40.6	98.7	7.6	106.3	81.8	7.2	56.5
South Eastern Melbourne	37.7	30.3	68.0	5.8	73.8	55.5	7.8	57.0
Mornington Peninsula	16.4	15.9	32.4	*2.5	34.9	39.7	*7.2	46.8
Balance of Victoria MSR-	110.5	98.4	208.9	28.5	237.4	266.2	12.0	47.1
Barwon-Western District	29.9	27.7	57.7	8.9	66.5	77.1	13.3	46.3
Central Highlands-Wimmera	15.9	11.5	27.5	6.0	33.5	41.5	17.9	44.6
Loddon-Campaspe-Mallee	24.0	19.1	43.0	4.9	48.0	52.7	10.3	47.7
Goulburn-Ovens-Murray	21.1	23.7	44.8	*3.5	48.3	39.8	*7.3	54.8
All Gippsland	19.5	16.4	35.8	5.2	41.0	55.0	12.7	42.7
<b>Total</b>	<b>484.0</b>	<b>337.2</b>	<b>821.2</b>	<b>96.2</b>	<b>917.4</b>	<b>882.4</b>	<b>10.5</b>	<b>51.0</b>

TABLE 8. CIVILIAN POPULATION AGED 15 YEARS AND OVER BY LABOUR FORCE STATUS,  
VICTORIAN REGIONS, APRIL 1993 - *continued*

Region	Employed			Unemp- loyed ( <i>'000</i> )	Labour force ( <i>'000</i> )	Not in labour force ( <i>'000</i> )	Unemp- loyment rate (per cent)	Partici- pation rate (per cent)
	Full- time ( <i>'000</i> )	Part- time ( <i>'000</i> )	Total ( <i>'000</i> )					
PERSONS								
Melbourne MSR-	1,100.8	318.5	1,419.3	178.9	1,598.2	938.6	11.2	63.0
North Western Melbourne	88.9	19.9	108.8	18.6	127.4	81.6	14.6	61.0
Outer Western Melbourne	163.1	37.2	200.4	33.9	234.3	144.2	14.5	61.9
Inner Melbourne	89.0	24.5	113.5	13.4	126.9	63.8	10.5	66.5
North Eastern Melbourne	142.3	37.6	179.9	25.4	205.3	132.8	12.4	60.7
Inner Eastern Melbourne	149.4	50.4	199.9	17.9	217.8	134.3	8.2	61.9
Southern Melbourne	113.5	38.4	151.9	20.8	172.7	113.1	12.1	60.4
Outer Eastern Melbourne	176.2	54.8	231.0	22.0	253.0	120.5	8.7	67.7
South Eastern Melbourne	122.5	35.6	158.1	16.1	174.2	88.6	9.3	66.3
Mornington Peninsula	55.9	20.0	75.9	10.6	86.5	59.6	12.3	59.2
Balance of Victoria MSR-	389.8	130.9	520.7	73.5	594.2	402.0	12.4	59.6
Barwon-Western District	111.6	36.8	148.4	20.8	169.2	118.8	12.3	58.8
Central Highlands-Wimmera	52.8	15.8	68.6	15.5	84.1	64.8	18.4	56.5
Loddon-Campaspe-Mallee	80.1	23.3	103.4	16.4	119.9	76.1	13.7	61.2
Goulburn-Ovens-Murray	77.9	30.7	108.6	8.4	117.0	58.0	7.2	66.8
All Gippsland	67.4	24.4	91.8	12.3	104.0	84.3	11.8	55.2
<b>Total</b>	<b>1,490.7</b>	<b>449.4</b>	<b>1,940.1</b>	<b>252.4</b>	<b>2,192.4</b>	<b>1,340.6</b>	<b>11.5</b>	<b>62.1</b>

UNEMPLOYMENT RATES: METROPOLITAN AND EX-METROPOLITAN AREAS  
BY SEX, VICTORIA, MAY 1993

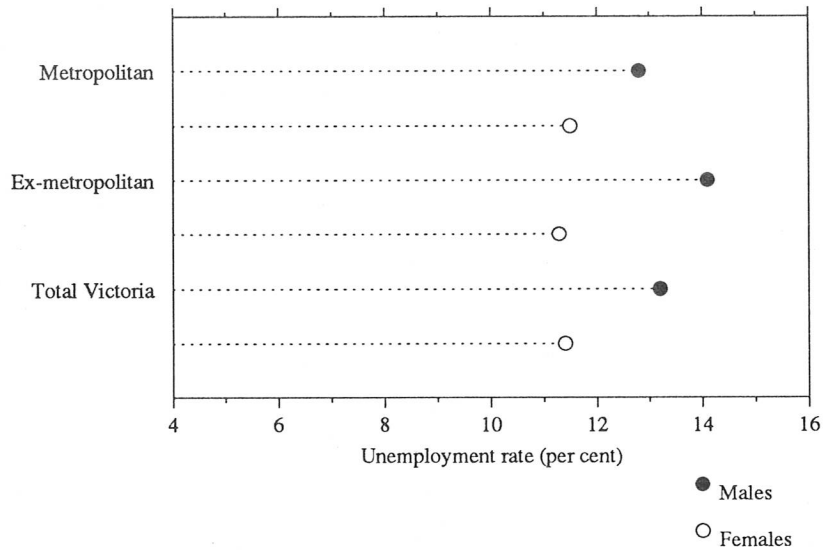


TABLE 9. CIVILIAN POPULATION AGED 15 YEARS AND OVER BY LABOUR FORCE STATUS,  
VICTORIAN REGIONS, MAY 1993

Region	Employed			Unemp- loyed ('000)	Labour force ('000)	Not in labour force ('000)	Unemp- loyment rate (per cent)	Partici- pation rate (per cent)
	Full- time ('000)	Part- time ('000)	Total ('000)					
MALES								
Melbourne MSR-	725.6	76.6	802.2	117.7	919.9	320.8	12.8	74.1
North Western Melbourne	53.9	5.0	58.9	10.6	69.5	29.5	15.3	70.2
Outer Western Melbourne	112.7	7.0	119.7	23.1	142.7	47.6	16.2	75.0
Inner Melbourne	46.5	5.9	52.4	12.9	65.2	25.3	19.7	72.1
North Eastern Melbourne	93.3	8.4	101.7	17.9	119.6	44.5	15.0	72.9
Inner Eastern Melbourne	102.2	14.2	116.5	8.2	124.6	45.8	6.6	73.1
Southern Melbourne	74.8	12.2	87.0	12.2	99.2	38.9	12.3	71.8
Outer Eastern Melbourne	119.8	12.8	132.6	16.1	148.7	35.7	10.8	80.6
South Eastern Melbourne	80.0	6.3	86.3	9.5	95.9	33.0	9.9	74.4
Mornington Peninsula	42.4	4.7	47.1	7.3	54.4	20.4	13.4	72.7
Balance of Victoria MSR-	277.7	34.9	312.6	51.2	363.8	129.2	14.1	73.8
Barwon-Western District	76.8	12.1	89.0	12.9	101.8	37.8	12.6	72.9
Central Highlands-Wimmera	39.3	*4.1	43.4	8.4	51.8	23.9	16.3	68.4
Loddon-Campaspe-Mallee	56.9	5.2	62.1	12.2	74.4	25.2	16.4	74.7
Goulburn-Ovens-Murray	56.4	5.8	62.2	7.0	69.1	17.6	10.1	79.7
All Gippsland	48.3	7.7	56.0	10.7	66.6	24.7	16.0	73.0
Total	1,003.3	111.5	1,114.8	168.9	1,283.7	450.0	13.2	74.0
MARRIED FEMALES								
Melbourne MSR-	201.3	155.9	357.3	30.3	387.6	337.0	7.8	53.5
North Western Melbourne	14.7	8.7	23.5	3.6	27.1	29.8	13.2	47.6
Outer Western Melbourne	35.9	20.3	56.2	7.5	63.6	56.2	11.7	53.1
Inner Melbourne	12.9	5.2	18.1	*1.0	19.2	11.0	*5.4	63.5
North Eastern Melbourne	25.7	16.4	42.1	4.1	46.2	49.5	8.9	48.3
Inner Eastern Melbourne	24.5	25.3	49.8	*1.3	51.1	48.3	*2.5	51.4
Southern Melbourne	23.2	15.4	38.6	*3.9	42.5	37.9	*9.2	52.9
Outer Eastern Melbourne	31.0	31.0	62.0	4.7	66.7	45.8	7.1	59.3
South Eastern Melbourne	21.7	20.8	42.5	*2.7	45.2	36.5	*5.9	55.3
Mornington Peninsula	11.6	12.9	24.5	*1.5	26.1	22.0	*5.9	54.2
Balance of Victoria MSR-	72.6	81.9	154.5	10.7	165.2	150.5	6.5	52.3
Barwon-Western District	18.0	22.6	40.6	*1.9	42.5	45.5	*4.5	48.3
Central Highlands-Wimmera	9.2	10.0	19.2	*2.1	21.3	23.9	*10.0	47.1
Loddon-Campaspe-Mallee	16.4	15.5	32.0	*2.4	34.3	27.6	*6.9	55.4
Goulburn-Ovens-Murray	15.8	21.7	37.6	*1.9	39.5	25.4	*4.7	60.8
All Gippsland	13.1	12.1	25.1	*2.4	27.6	28.0	*8.8	49.7
Total	273.9	237.9	511.8	41.0	552.8	487.5	7.4	53.1
ALL FEMALES								
Melbourne MSR-	368.2	234.3	602.5	78.0	680.6	616.0	11.5	52.5
North Western Melbourne	32.2	13.8	45.9	8.8	54.7	55.1	16.0	49.8
Outer Western Melbourne	56.2	28.6	84.8	16.8	101.6	94.8	16.5	51.7
Inner Melbourne	38.5	18.3	56.8	5.3	62.1	38.7	8.5	61.6
North Eastern Melbourne	43.3	25.8	69.1	13.4	82.5	84.3	16.3	49.5
Inner Eastern Melbourne	48.1	38.2	86.4	5.2	91.6	90.5	5.7	50.3
Southern Melbourne	42.0	24.4	66.5	8.2	74.7	74.4	11.0	50.1
Outer Eastern Melbourne	55.1	41.5	96.6	9.0	105.6	78.8	8.5	57.3
South Eastern Melbourne	35.5	26.4	61.9	7.0	68.8	59.8	10.1	53.5
Mornington Peninsula	17.3	17.3	34.6	4.4	38.9	39.7	11.2	49.5
Balance of Victoria MSR-	112.5	106.3	218.8	27.8	246.6	257.4	11.3	48.9
Barwon-Western District	29.7	29.0	58.6	6.6	65.2	75.6	10.1	46.3
Central Highlands-Wimmera	13.4	14.1	27.5	5.7	33.1	41.7	17.1	44.3
Loddon-Campaspe-Mallee	25.3	21.2	46.4	5.2	51.6	50.2	10.0	50.7
Goulburn-Ovens-Murray	23.6	25.9	49.5	*3.5	53.0	38.3	*6.6	58.1
All Gippsland	20.6	16.1	36.7	6.9	43.6	51.6	15.8	45.8
Total	480.7	340.6	821.3	105.9	927.2	873.4	11.4	51.5



TABLE 9. CIVILIAN POPULATION AGED 15 YEARS AND OVER BY LABOUR FORCE STATUS,  
VICTORIAN REGIONS, MAY 1993 - *continued*

Region	Employed			Unemp- loyed ( <i>'000</i> )	Labour force ( <i>'000</i> )	Not in labour force ( <i>'000</i> )	Unemp- loyment rate (per cent)	Partici- pation rate (per cent)
	Full- time ( <i>'000</i> )	Part- time ( <i>'000</i> )	Total ( <i>'000</i> )					
PERSONS								
Melbourne MSR-	1,093.8	310.9	1,404.7	195.8	1,600.5	936.8	12.2	63.1
North Western Melbourne	86.1	18.8	104.8	19.4	124.2	84.6	15.6	59.5
Outer Western Melbourne	168.9	35.6	204.5	39.9	244.4	142.4	16.3	63.2
Inner Melbourne	85.0	24.2	109.2	18.1	127.3	64.0	14.2	66.6
North Eastern Melbourne	136.6	34.2	170.8	31.4	202.2	128.8	15.5	61.1
Inner Eastern Melbourne	150.4	52.5	202.8	13.4	216.2	136.3	6.2	61.3
Southern Melbourne	116.8	36.7	153.5	20.4	173.9	113.3	11.7	60.5
Outer Eastern Melbourne	174.9	54.3	229.2	25.1	254.2	114.5	9.9	68.9
South Eastern Melbourne	115.5	32.7	148.2	16.5	164.7	92.8	10.0	64.0
Mornington Peninsula	59.7	22.0	81.7	11.7	93.3	60.1	12.5	60.8
Balance of Victoria MSR-	390.2	141.2	531.4	79.0	610.4	386.6	12.9	61.2
Barwon-Western District	106.5	41.1	147.6	19.5	167.0	113.4	11.7	59.6
Central Highlands-Wimmera	52.6	18.2	70.9	14.1	85.0	65.6	16.6	56.4
Loddon-Campaspe-Mallee	82.2	26.4	108.6	17.4	126.0	75.4	13.8	62.6
Goulburn-Ovens-Murray	80.0	31.6	111.7	10.5	122.1	55.9	8.6	68.6
All Gippsland	68.9	23.8	92.7	17.6	110.3	76.3	15.9	59.1
<b>Total</b>	<b>1,484.0</b>	<b>452.1</b>	<b>1,936.1</b>	<b>274.8</b>	<b>2,210.9</b>	<b>1,323.4</b>	<b>12.4</b>	<b>62.6</b>

PARTICIPATION RATES: METROPOLITAN AND EX-METROPOLITAN AREAS  
BY SEX, VICTORIA, MAY 1993

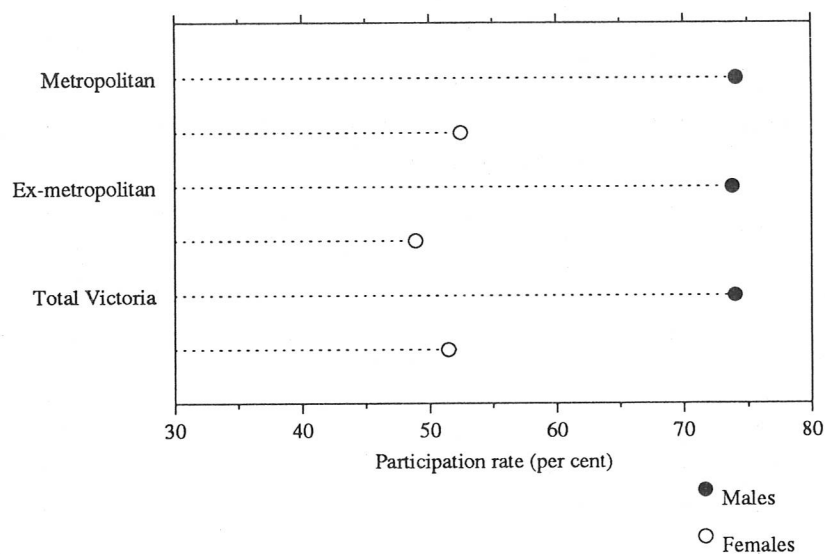


TABLE 10. CIVILIAN POPULATION AGED 15 YEARS AND OVER BY  
LABOUR FORCE STATUS AND AGE,  
VICTORIAN REGIONS, MAY 1993

Age (years)	Males				Females				Persons			
	Employed ( <i>'000</i> )	Labour force ( <i>'000</i> )	Not in labour force ( <i>'000</i> )	Partici- pation rate (per cent)	Employed ( <i>'000</i> )	Labour force ( <i>'000</i> )	Not in labour force ( <i>'000</i> )	Partici- pation rate (per cent)	Employed ( <i>'000</i> )	Labour force ( <i>'000</i> )	Not in labour force ( <i>'000</i> )	Partici- pation rate (per cent)
NORTH WESTERN MELBOURNE												
15 - 24	10.6	13.7	4.5	75.2	13.2	17.8	8.8	66.9	23.8	31.6	13.4	70.3
25 - 34	22.9	26.1	*2.1	92.5	13.4	15.5	7.2	68.3	36.3	41.5	9.3	81.7
35 - 44	11.6	13.5	*2.4	84.7	9.4	10.7	5.8	65.1	21.1	24.2	8.2	74.7
45 - 54	8.2	10.1	*1.9	83.9	7.5	8.0	6.5	55.3	15.7	18.1	8.4	68.3
55 and over	5.5	6.1	18.5	24.8	*2.4	*2.7	26.8	*9.1	7.9	8.8	45.3	16.2
<b>Total</b>	<b>58.9</b>	<b>69.5</b>	<b>29.5</b>	<b>70.2</b>	<b>45.9</b>	<b>54.7</b>	<b>55.1</b>	<b>49.8</b>	<b>104.8</b>	<b>124.2</b>	<b>84.6</b>	<b>59.5</b>
OUTER WESTERN MELBOURNE												
15 - 24	16.2	24.3	10.4	69.9	16.9	23.9	13.7	63.6	33.2	48.2	24.1	66.6
25 - 34	35.5	41.0	*1.6	96.3	28.1	32.5	13.8	70.2	63.6	73.5	15.4	82.7
35 - 44	32.7	37.9	3.2	92.2	23.0	26.2	12.0	68.5	55.7	64.0	15.3	80.8
45 - 54	24.4	26.8	*2.7	90.7	14.2	16.3	12.7	56.2	38.6	43.1	15.4	73.6
55 and over	10.9	12.8	29.6	30.1	*2.5	*2.8	42.6	*6.2	13.4	15.6	72.2	17.8
<b>Total</b>	<b>119.7</b>	<b>142.7</b>	<b>47.6</b>	<b>75.0</b>	<b>84.8</b>	<b>101.6</b>	<b>94.8</b>	<b>51.7</b>	<b>204.5</b>	<b>244.4</b>	<b>142.4</b>	<b>63.2</b>
INNER MELBOURNE												
15 - 24	8.3	11.9	7.0	63.0	13.9	16.6	5.9	73.8	22.3	28.5	12.9	68.8
25 - 34	19.1	24.1	*2.1	92.0	22.3	22.9	4.6	83.2	41.4	47.0	6.7	87.5
35 - 44	15.6	17.5	*1.4	92.8	11.9	13.2	*1.8	87.9	27.6	30.8	*3.2	90.6
45 - 54	6.2	7.6	*1.1	87.5	4.9	5.7	3.9	59.4	11.1	13.2	5.0	72.7
55 and over	*3.1	4.2	13.8	23.2	3.7	3.7	22.4	14.2	6.8	7.9	36.2	17.8
<b>Total</b>	<b>52.4</b>	<b>65.2</b>	<b>25.3</b>	<b>72.1</b>	<b>56.8</b>	<b>62.1</b>	<b>38.7</b>	<b>61.6</b>	<b>109.2</b>	<b>127.3</b>	<b>64.0</b>	<b>66.6</b>
NORTH EASTERN MELBOURNE												
15 - 24	18.2	25.0	13.5	64.9	15.3	22.3	17.3	56.3	33.4	47.2	30.8	60.5
25 - 34	27.1	31.1	*1.6	95.2	15.9	19.2	11.5	62.6	43.0	50.3	13.0	79.4
35 - 44	25.1	28.6	*1.1	96.3	20.4	22.5	12.0	65.2	45.5	51.1	13.1	79.6
45 - 54	21.2	22.5	*2.7	89.2	12.2	13.2	9.8	57.3	33.3	35.7	12.6	74.0
55 and over	10.2	12.5	25.7	32.8	5.3	5.3	33.6	13.7	15.6	17.9	59.3	23.2
<b>Total</b>	<b>101.7</b>	<b>119.6</b>	<b>44.5</b>	<b>72.9</b>	<b>69.1</b>	<b>82.5</b>	<b>84.3</b>	<b>49.5</b>	<b>170.8</b>	<b>202.2</b>	<b>128.8</b>	<b>61.1</b>
INNER EASTERN MELBOURNE												
15 - 24	18.0	21.0	15.3	57.8	16.5	19.1	14.4	57.0	34.5	40.0	29.7	57.4
25 - 34	23.9	25.3	*2.6	90.5	20.8	22.1	7.5	74.6	44.7	47.4	10.2	82.3
35 - 44	30.5	31.1	*0.3	99.1	22.5	23.6	7.3	76.3	53.0	54.6	7.6	87.8
45 - 54	28.0	29.1	*0.8	97.2	20.2	20.4	11.9	63.2	48.2	49.5	12.8	79.5
55 and over	16.0	18.3	26.7	40.6	6.4	6.4	49.3	11.4	22.4	24.6	76.0	24.5
<b>Total</b>	<b>116.5</b>	<b>124.6</b>	<b>45.8</b>	<b>73.1</b>	<b>86.4</b>	<b>91.6</b>	<b>90.5</b>	<b>50.3</b>	<b>202.8</b>	<b>216.2</b>	<b>136.3</b>	<b>61.3</b>
SOUTHERN MELBOURNE												
15 - 24	16.5	20.9	6.0	77.7	12.2	15.3	8.9	63.1	28.7	36.2	14.9	70.8
25 - 34	20.3	21.9	*1.6	93.2	18.3	20.1	5.1	79.8	38.6	41.9	6.7	86.3
35 - 44	22.3	25.3	*1.4	94.9	16.0	18.6	7.8	70.3	38.3	43.9	9.2	82.7
45 - 54	19.0	20.8	*1.9	91.6	14.0	14.7	5.4	73.0	32.9	35.6	7.4	82.9
55 and over	8.9	10.2	28.0	26.7	6.1	6.1	47.1	11.4	15.0	16.3	75.1	17.8
<b>Total</b>	<b>87.0</b>	<b>99.2</b>	<b>38.9</b>	<b>71.8</b>	<b>66.5</b>	<b>74.7</b>	<b>74.4</b>	<b>50.1</b>	<b>153.5</b>	<b>173.9</b>	<b>113.3</b>	<b>60.5</b>

TABLE 10. CIVILIAN POPULATION AGED 15 YEARS AND OVER BY  
LABOUR FORCE STATUS AND AGE,  
VICTORIAN REGIONS, MAY 1993 - *continued*

Age (years)	Males				Females				Persons			
	Employed ( <i>'000</i> )	Labour force ( <i>'000</i> )	Not in labour force ( <i>'000</i> )	Partici- pation rate (per cent)	Employed ( <i>'000</i> )	Labour force ( <i>'000</i> )	Not in labour force ( <i>'000</i> )	Partici- pation rate (per cent)	Employed ( <i>'000</i> )	Labour force ( <i>'000</i> )	Not in labour force ( <i>'000</i> )	Partici- pation rate (per cent)
OUTER EASTERN MELBOURNE												
15 - 24	28.2	33.8	8.0	80.9	17.9	21.5	9.8	68.6	46.1	55.3	17.8	75.7
25 - 34	34.8	37.2	*1.8	95.3	24.6	26.9	12.0	69.1	59.4	64.1	13.9	82.2
35 - 44	32.1	36.4	*1.1	97.1	27.7	30.6	9.7	76.0	59.8	67.0	10.8	86.2
45 - 54	28.4	29.8	*1.4	95.6	20.7	21.0	8.3	71.7	49.1	50.8	9.7	84.0
55 and over	9.0	11.4	23.4	32.8	5.6	5.6	39.0	12.5	14.6	17.0	62.5	21.4
<b>Total</b>	<b>132.6</b>	<b>148.7</b>	<b>35.7</b>	<b>80.6</b>	<b>96.6</b>	<b>105.6</b>	<b>78.8</b>	<b>57.3</b>	<b>229.2</b>	<b>254.2</b>	<b>114.5</b>	<b>68.9</b>
SOUTH EASTERN MELBOURNE												
15 - 24	16.1	18.6	9.9	65.3	13.6	16.6	9.0	64.9	29.7	35.2	18.9	65.1
25 - 34	22.8	24.6	*0.5	98.0	14.6	15.6	11.3	58.0	37.4	40.2	11.8	77.3
35 - 44	23.4	26.2	*2.2	92.3	18.3	19.6	11.0	64.1	41.7	45.8	13.2	77.7
45 - 54	17.6	19.3	*2.5	88.7	12.4	13.7	4.4	75.6	30.0	33.0	6.9	82.7
55 and over	6.4	7.2	18.0	28.7	*3.0	*3.3	24.1	*12.0	9.4	10.5	42.0	20.0
<b>Total</b>	<b>86.3</b>	<b>95.9</b>	<b>33.0</b>	<b>74.4</b>	<b>61.9</b>	<b>68.8</b>	<b>59.8</b>	<b>53.5</b>	<b>148.2</b>	<b>164.7</b>	<b>92.8</b>	<b>64.0</b>
MORNINGTON PENINSULA												
15 - 24	7.8	10.5	4.4	70.7	4.5	6.6	5.0	56.7	12.3	17.1	9.4	64.6
25 - 34	13.7	14.8	*0.5	96.6	9.7	11.2	6.2	64.5	23.4	26.0	6.7	79.5
35 - 44	10.2	10.8	*0.8	93.1	10.2	10.7	3.7	74.5	20.4	21.5	4.5	82.8
45 - 54	8.7	10.5	*1.1	90.6	7.8	8.0	*2.6	75.5	16.4	18.6	3.7	83.4
55 and over	6.7	7.8	13.6	36.4	*2.4	*2.4	22.2	*9.8	9.2	10.2	35.9	22.2
<b>Total</b>	<b>47.1</b>	<b>54.4</b>	<b>20.4</b>	<b>72.7</b>	<b>34.6</b>	<b>38.9</b>	<b>39.7</b>	<b>49.5</b>	<b>81.7</b>	<b>93.3</b>	<b>60.1</b>	<b>60.8</b>

UNEMPLOYMENT RATES: VICTORIAN LABOUR FORCE REGIONS,  
MAY 1993

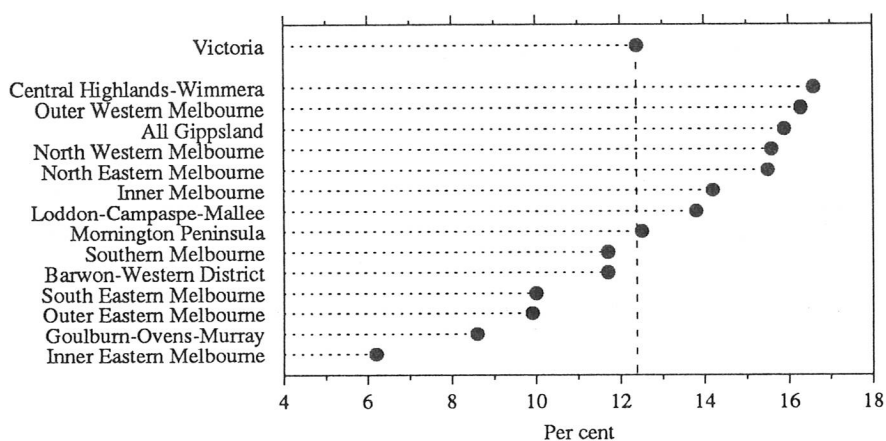


TABLE 10. CIVILIAN POPULATION AGED 15 YEARS AND OVER BY  
LABOUR FORCE STATUS AND AGE,  
VICTORIAN REGIONS, MAY 1993 - *continued*

Age (years)	Males				Females				Persons			
	Employed ( <i>'000</i> )	Labour force ( <i>'000</i> )	Not in labour force ( <i>'000</i> )	Partici- pation rate (per cent)	Employed ( <i>'000</i> )	Labour force ( <i>'000</i> )	Not in labour force ( <i>'000</i> )	Partici- pation rate (per cent)	Employed ( <i>'000</i> )	Labour force ( <i>'000</i> )	Not in labour force ( <i>'000</i> )	Partici- pation rate (per cent)
<b>BARWON-WESTERN DISTRICT</b>												
15 - 24	17.1	23.3	8.3	73.8	13.1	16.7	9.3	64.4	30.2	40.1	17.6	69.5
25 - 34	23.4	25.5	*2.4	91.3	15.1	16.3	13.3	55.1	38.5	41.8	15.7	72.7
35 - 44	22.3	24.3	*1.8	93.2	16.6	17.8	7.6	70.1	38.8	42.1	9.4	81.8
45 - 54	13.7	15.0	*2.2	87.2	10.9	11.5	7.2	61.6	24.5	26.5	9.4	73.9
55 and over	12.5	13.6	23.1	37.1	*3.0	*3.0	38.4	*7.2	15.5	16.6	61.4	21.3
<b>Total</b>	<b>89.0</b>	<b>101.8</b>	<b>37.8</b>	<b>72.9</b>	<b>58.6</b>	<b>65.2</b>	<b>75.6</b>	<b>46.3</b>	<b>147.6</b>	<b>167.0</b>	<b>113.4</b>	<b>59.6</b>
<b>CENTRAL HIGHLANDS-WIMMERA</b>												
15 - 24	5.6	7.2	*3.9	64.5	5.0	7.9	6.2	56.0	10.5	15.1	10.2	59.7
25 - 34	16.3	18.4	*2.1	89.9	9.3	10.2	6.0	63.0	25.7	28.7	8.1	78.0
35 - 44	10.4	12.5	*2.0	86.0	5.9	7.1	*4.4	61.7	16.3	19.6	6.4	75.3
45 - 54	6.3	7.4	*1.8	80.4	5.5	5.8	*2.5	69.5	11.7	13.2	*4.3	75.2
55 and over	4.8	6.4	14.1	31.1	*1.9	*2.1	22.5	*8.7	6.7	8.5	36.5	18.8
<b>Total</b>	<b>43.4</b>	<b>51.8</b>	<b>23.9</b>	<b>68.4</b>	<b>27.5</b>	<b>33.1</b>	<b>41.7</b>	<b>44.3</b>	<b>70.9</b>	<b>85.0</b>	<b>65.6</b>	<b>56.4</b>
<b>LODDON-CAMPASPE-MALLEE</b>												
15 - 24	14.1	16.9	7.9	68.1	9.2	11.1	7.0	61.3	23.2	27.9	14.9	65.2
25 - 34	12.5	15.6	*0.4	97.8	9.6	10.5	9.0	53.9	22.1	26.2	9.4	73.6
35 - 44	14.3	17.9	*1.0	94.7	13.4	14.2	6.3	69.1	27.8	32.1	7.3	81.4
45 - 54	13.7	14.8	*1.9	88.6	10.1	11.5	5.4	68.1	23.8	26.3	7.3	78.3
55 and over	7.6	9.2	14.0	39.5	*4.1	4.4	22.4	16.3	11.7	13.5	36.5	27.0
<b>Total</b>	<b>62.1</b>	<b>74.4</b>	<b>25.2</b>	<b>74.7</b>	<b>46.4</b>	<b>51.6</b>	<b>50.2</b>	<b>50.7</b>	<b>108.6</b>	<b>126.0</b>	<b>75.4</b>	<b>62.6</b>
<b>GOULBURN-OVENS-MURRAY</b>												
15 - 24	8.0	10.4	*3.1	77.3	10.6	11.9	5.7	67.8	18.6	22.3	8.7	71.9
25 - 34	13.9	15.3	*0.7	95.7	9.5	10.4	5.4	65.8	23.5	25.7	6.1	80.8
35 - 44	15.8	17.5	*0.5	97.1	14.1	14.6	*3.7	79.9	29.9	32.1	*4.2	88.5
45 - 54	15.2	16.0	*1.0	94.0	10.3	10.8	*3.0	78.0	25.5	26.9	*4.1	86.9
55 and over	9.2	9.8	12.3	44.2	5.0	5.3	20.5	20.5	14.3	15.1	32.9	31.5
<b>Total</b>	<b>62.2</b>	<b>69.1</b>	<b>17.6</b>	<b>79.7</b>	<b>49.5</b>	<b>53.0</b>	<b>38.3</b>	<b>58.1</b>	<b>111.7</b>	<b>122.1</b>	<b>55.9</b>	<b>68.6</b>
<b>ALL GIPPSLAND</b>												
15 - 24	10.3	14.0	*3.3	80.7	8.3	10.8	6.3	63.2	18.7	24.8	9.7	71.9
25 - 34	14.7	17.1	*1.4	92.2	8.1	9.6	7.6	56.0	22.8	26.7	9.0	74.8
35 - 44	13.7	15.2	*0.8	95.3	10.2	11.7	*4.4	72.7	23.9	26.9	5.1	83.9
45 - 54	11.2	12.1	*1.1	92.0	7.3	8.7	*4.0	68.7	18.4	20.8	5.0	80.6
55 and over	6.1	8.3	18.1	31.4	*2.8	*2.8	29.4	*8.7	8.9	11.1	47.5	18.9
<b>Total</b>	<b>56.0</b>	<b>66.6</b>	<b>24.7</b>	<b>73.0</b>	<b>36.7</b>	<b>43.6</b>	<b>51.6</b>	<b>45.8</b>	<b>92.7</b>	<b>110.3</b>	<b>76.3</b>	<b>59.1</b>

TABLE 10. CIVILIAN POPULATION AGED 15 YEARS AND OVER BY  
LABOUR FORCE STATUS AND AGE,  
VICTORIAN REGIONS, MAY 1993 - *continued*

Age (years)	Males				Females				Persons			
	Employed ( <i>'000</i> )	Labour force ( <i>'000</i> )	Not in labour force ( <i>'000</i> )	Partici- pation rate (per cent)	Employed ( <i>'000</i> )	Labour force ( <i>'000</i> )	Not in labour force ( <i>'000</i> )	Partici- pation rate (per cent)	Employed ( <i>'000</i> )	Labour force ( <i>'000</i> )	Not in labour force ( <i>'000</i> )	Partici- pation rate (per cent)
TOTAL MELBOURNE MSR												
15 - 19 -	41.9	59.9	59.4	50.2	34.3	52.2	62.8	45.4	76.2	112.0	122.2	47.8
15 - 17	16.7	25.5	44.1	36.6	16.7	23.1	43.4	34.7	33.4	48.6	87.5	35.7
18 - 19	25.2	34.4	15.3	69.3	17.6	29.1	19.4	60.0	42.8	63.5	34.6	64.7
20 - 24	97.9	119.8	19.6	85.9	89.8	107.5	30.1	78.1	187.7	227.3	49.8	82.0
25 - 34	220.2	246.1	14.5	94.4	167.7	185.9	79.1	70.1	387.9	432.0	93.6	82.2
35 - 44	203.6	227.2	13.8	94.3	159.5	175.7	71.2	71.2	363.1	402.9	85.0	82.6
45 - 54	161.6	176.5	16.1	91.6	113.8	121.0	65.6	64.9	275.4	297.5	81.7	78.5
55 - 59	43.5	50.5	20.2	71.4	21.5	22.3	46.7	32.3	65.0	72.8	66.9	52.1
60 - 64	24.3	30.0	33.9	47.0	11.7	11.7	52.4	18.2	36.0	41.6	86.3	32.5
65 and over	9.0	10.1	143.3	6.6	4.3	4.3	208.1	2.0	13.3	14.3	351.4	3.9
<b>Total</b>	<b>802.2</b>	<b>919.9</b>	<b>320.8</b>	<b>74.1</b>	<b>602.5</b>	<b>680.6</b>	<b>616.0</b>	<b>52.5</b>	<b>1,404.7</b>	<b>1,600.5</b>	<b>936.8</b>	<b>63.1</b>
TOTAL BALANCE OF VICTORIA MSR												
15 - 19 -	20.7	25.9	21.4	54.7	15.4	21.3	21.9	49.3	36.1	47.2	43.3	52.1
15 - 17	9.7	11.3	16.3	40.9	6.1	8.7	16.2	35.0	15.8	20.0	32.5	38.1
18 - 19	11.0	14.6	5.1	74.2	9.3	12.6	5.7	68.8	20.2	27.2	10.8	71.6
20 - 24	34.4	45.9	5.2	89.9	30.8	37.1	12.6	74.7	65.2	83.0	17.7	82.4
25 - 34	80.8	92.0	7.0	93.0	51.7	57.1	41.3	58.0	132.5	149.1	48.3	75.5
35 - 44	76.5	87.4	6.1	93.5	60.2	65.3	26.4	71.2	136.7	152.7	32.5	82.5
45 - 54	59.9	65.4	8.0	89.1	44.0	48.2	22.0	68.6	103.9	113.6	30.0	79.1
55 - 59	17.0	22.1	6.6	77.0	10.0	10.8	17.6	38.0	27.0	32.9	24.2	57.6
60 - 64	14.1	16.0	11.9	57.2	4.4	4.4	23.3	16.0	18.5	20.4	35.2	36.7
65 and over	9.2	9.2	63.1	12.7	*2.3	*2.3	92.3	*2.5	11.5	11.5	155.4	6.9
<b>Total</b>	<b>312.6</b>	<b>363.8</b>	<b>129.2</b>	<b>73.8</b>	<b>218.8</b>	<b>246.6</b>	<b>257.4</b>	<b>48.9</b>	<b>531.4</b>	<b>610.4</b>	<b>386.6</b>	<b>61.2</b>
TOTAL VICTORIA												
15 - 19 -	62.6	85.7	80.8	51.5	49.8	73.5	84.7	46.5	112.3	159.2	165.4	49.0
15 - 17	26.4	36.8	60.5	37.8	22.8	31.8	59.6	34.8	49.3	68.6	120.1	36.4
18 - 19	36.2	48.9	20.3	70.7	26.9	41.7	25.1	62.4	63.1	90.6	45.4	66.6
20 - 24	132.3	165.7	24.8	87.0	120.5	144.5	42.7	77.2	252.9	310.3	67.5	82.1
25 - 34	301.0	338.0	21.5	94.0	219.4	243.0	120.4	66.9	520.5	581.1	141.9	80.4
35 - 44	280.1	314.6	19.9	94.1	219.7	241.0	97.6	71.2	499.8	555.6	117.4	82.6
45 - 54	221.5	241.9	24.1	90.9	157.8	169.3	87.6	65.9	379.4	411.1	111.7	78.6
55 - 59	60.6	72.5	26.8	73.0	31.4	33.1	64.4	34.0	92.0	105.7	91.2	53.7
60 - 64	38.4	46.0	45.8	50.1	16.1	16.1	75.7	17.5	54.5	62.0	121.5	33.8
65 and over	18.2	19.2	206.4	8.5	6.6	6.6	300.4	2.2	24.8	25.8	506.8	4.9
<b>Total</b>	<b>1,114.8</b>	<b>1,283.7</b>	<b>450.0</b>	<b>74.0</b>	<b>821.3</b>	<b>927.2</b>	<b>873.4</b>	<b>51.5</b>	<b>1,936.1</b>	<b>2,210.9</b>	<b>1,323.4</b>	<b>62.6</b>

TABLE 11. EMPLOYED PERSONS BY INDUSTRY, VICTORIAN REGIONS, MAY 1993  
(<sup>'000</sup>)

Industry	Melbourne MSR									Total
	North Western	Outer Western	Inner	North Eastern	Inner Eastern	Southern	Outer Eastern	South Eastern	Mornington Peninsula	
MALES										
Agriculture, forestry, fishing, hunting and mining	*0.3	*1.0	*0.3	*0.6	*1.6	*0.8	*2.6	*3.2	*0.8	11.2
Manufacturing	19.1	33.8	8.8	26.0	16.9	18.8	26.5	25.5	11.7	187.1
Electricity, gas and water and communication	*0.8	3.3	*0.5	4.8	4.0	*2.9	6.4	*2.6	*3.2	28.6
Construction	7.3	11.3	*1.3	7.7	8.1	6.3	12.1	9.7	6.4	70.1
Wholesale and retail	8.7	26.5	9.9	22.2	28.5	19.0	33.5	20.5	8.3	177.1
Transport and storage	4.7	12.5	*1.1	6.1	7.5	4.5	6.7	6.5	*2.7	52.3
Finance, property, and business services	6.6	11.5	11.2	12.3	23.8	15.0	21.2	7.6	3.8	112.9
Public administration and defense	3.0	5.3	3.5	5.6	5.5	*3.2	3.8	*1.6	*2.1	33.5
Community services (a)	6.3	9.6	6.7	12.1	14.4	10.1	13.4	5.3	4.2	82.1
Recreational, personal, and other services	*2.1	4.9	9.0	4.3	6.2	6.3	6.5	4.0	4.0	47.3
<b>Total</b>	<b>58.9</b>	<b>119.7</b>	<b>52.4</b>	<b>101.7</b>	<b>116.5</b>	<b>87.0</b>	<b>132.6</b>	<b>86.3</b>	<b>47.1</b>	<b>802.2</b>
FEMALES										
Agriculture, forestry, fishing, hunting and mining	*0.3	*0.3	*0.3	*0.5	*0.3	*0.0	*0.8	*1.8	*0.5	4.7
Manufacturing	8.2	11.9	6.4	10.6	6.0	9.6	15.5	14.0	4.9	87.1
Electricity, gas and water and communication	*1.5	*1.8	*0.3	*0.8	*1.3	*0.8	*1.3	*1.0	*0.5	9.3
Construction	*0.5	*2.3	*0.0	*0.8	*0.8	*1.0	*1.0	*1.8	*2.3	10.5
Wholesale and retail	7.4	22.1	10.9	16.4	18.7	13.7	25.2	16.1	9.8	140.2
Transport and storage	*1.0	3.1	*1.0	*0.8	*1.5	*0.8	*1.6	*1.5	*0.0	11.5
Finance, property, and business services	6.8	11.9	10.8	10.0	14.1	12.0	13.3	8.4	*3.1	90.3
Public administration and defense	4.1	4.7	*3.3	*2.3	*1.8	*2.3	5.2	*2.0	*0.5	26.3
Community services (a)	11.6	19.1	17.4	23.4	33.9	21.9	26.0	12.3	9.6	175.2
Recreational, personal, and other services	4.6	7.7	6.5	*3.4	8.0	4.3	6.7	*2.8	*3.3	47.4
<b>Total</b>	<b>45.9</b>	<b>84.8</b>	<b>56.8</b>	<b>69.1</b>	<b>86.4</b>	<b>66.5</b>	<b>96.6</b>	<b>61.9</b>	<b>34.6</b>	<b>602.5</b>
PERSONS										
Agriculture, forestry, fishing, hunting and mining	*0.5	*1.3	*0.5	*1.1	*1.9	*0.8	*3.3	5.1	*1.3	15.8
Manufacturing	27.3	45.7	15.2	36.7	23.0	28.4	42.0	39.4	16.6	274.2
Electricity, gas and water and communication	*2.3	5.1	*0.8	5.6	5.3	*3.7	7.7	3.6	3.7	37.8
Construction	7.8	13.6	*1.3	8.5	8.8	7.4	13.1	11.5	8.7	80.7
Wholesale and retail	16.0	48.6	20.8	38.6	47.2	32.8	58.7	36.6	18.0	317.3
Transport and storage	5.8	15.6	*2.1	7.0	9.0	5.3	8.3	8.0	*2.7	63.8
Finance, property, and business services	13.4	23.4	22.1	22.3	37.8	26.9	34.5	16.0	6.9	203.2
Public administration and defense	7.1	10.0	6.8	7.9	7.3	5.6	9.0	3.6	*2.6	59.8
Community services (a)	17.9	28.7	24.1	35.5	48.3	32.0	39.5	17.6	13.8	257.4
Recreational, personal, and other services	6.8	12.6	15.5	7.6	14.2	10.7	13.2	6.8	7.3	94.7
<b>Total</b>	<b>104.8</b>	<b>204.5</b>	<b>109.2</b>	<b>170.8</b>	<b>202.8</b>	<b>153.5</b>	<b>229.2</b>	<b>148.2</b>	<b>81.7</b>	<b>1,404.7</b>

TABLE 11. EMPLOYED PERSONS BY INDUSTRY, VICTORIAN REGIONS,  
MAY 1993 - *continued*  
(*'000*)

Industry	Balance of Victoria MSR					Total Victoria			
	Barwon- Western District	Central Highlands- Wimmera	Loddon- Campaspe- Mallee	Goulburn- Ovens- Murray	All- Gippsland	Total	Married	Other	Total
MALES									
Agriculture, forestry, fishing, hunting and mining	10.5	8.0	10.5	11.6	10.9	51.4	46.3	16.2	62.6
Manufacturing	20.0	7.0	13.0	10.5	4.7	55.3	159.1	83.3	242.4
Electricity, gas and water and communication	*2.3	*0.8	*1.3	*1.5	7.1	13.0	25.8	15.7	41.5
Construction	9.6	*4.4	5.2	5.5	7.0	31.7	69.8	32.1	101.9
Wholesale and retail	18.0	11.9	13.5	10.7	9.6	63.7	143.8	97.0	240.8
Transport and storage	4.2	*2.4	4.7	*3.8	*3.6	18.6	50.9	20.1	71.0
Finance, property, and business services	7.2	*1.7	*1.8	*3.3	*3.3	17.4	87.3	43.0	130.3
Public administration and defense	*3.3	*0.8	*3.8	4.8	*2.4	15.1	32.8	15.8	48.6
Community services (a)	8.3	*4.3	4.5	8.1	5.0	30.2	83.5	28.9	112.3
Recreational, personal, and other services	5.5	*2.1	*3.9	*2.4	*2.2	16.2	28.5	34.9	63.5
<b>Total</b>	<b>89.0</b>	<b>43.4</b>	<b>62.1</b>	<b>62.2</b>	<b>56.0</b>	<b>312.6</b>	<b>727.7</b>	<b>387.0</b>	<b>1,114.8</b>
FEMALES									
Agriculture, forestry, fishing, hunting and mining	4.3	*2.8	*2.9	5.0	*4.7	19.7	22.2	*2.2	24.4
Manufacturing	5.7	*1.9	4.6	4.7	*2.4	19.3	72.1	34.4	106.4
Electricity, gas and water and communication	*0.0	*0.5	*1.0	*0.2	*1.0	*2.9	6.4	5.7	12.1
Construction	*1.1	*0.9	*0.8	*0.9	*1.3	5.0	13.7	*1.8	15.6
Wholesale and retail	13.4	*4.3	9.9	9.9	7.4	44.9	104.2	80.9	185.1
Transport and storage	*1.0	*0.0	*1.0	*1.0	*1.4	4.5	9.9	6.1	16.0
Finance, property, and business services	5.8	*1.0	*1.9	*3.1	*2.8	14.7	65.5	39.5	105.0
Public administration and defense	*3.4	*2.9	*3.2	4.8	*1.7	16.0	24.5	17.8	42.3
Community services (a)	17.9	10.6	14.9	13.7	10.5	67.7	156.9	86.0	242.9
Recreational, personal, and other services	5.9	*2.5	6.2	6.2	*3.4	24.2	36.3	35.2	71.6
<b>Total</b>	<b>58.6</b>	<b>27.5</b>	<b>46.4</b>	<b>49.5</b>	<b>36.7</b>	<b>218.8</b>	<b>511.8</b>	<b>309.6</b>	<b>821.3</b>
PERSONS									
Agriculture, forestry, fishing, hunting and mining	14.8	10.8	13.4	16.7	15.6	71.1	68.5	18.4	87.0
Manufacturing	25.7	8.9	17.6	15.2	7.1	74.6	231.2	117.7	348.8
Electricity, gas and water and communication	*2.3	*1.3	*2.4	*1.7	8.2	15.8	32.2	21.4	53.7
Construction	10.7	5.3	6.0	6.3	8.4	36.8	83.5	33.9	117.4
Wholesale and retail	31.5	16.2	23.3	20.6	17.0	108.6	248.0	177.9	425.9
Transport and storage	5.2	*2.4	5.7	4.8	5.0	23.1	60.7	26.2	86.9
Finance, property, and business services	13.1	*2.8	*3.7	6.4	6.1	32.0	152.8	82.5	235.2
Public administration and defense	6.7	*3.6	7.0	9.5	*4.2	31.1	57.3	33.6	90.9
Community services (a)	26.2	15.0	19.3	21.8	15.6	97.9	240.4	114.9	355.2
Recreational, personal, and other services	11.4	*4.7	10.1	8.6	5.6	40.3	64.9	70.2	135.0
<b>Total</b>	<b>147.6</b>	<b>70.9</b>	<b>108.6</b>	<b>111.7</b>	<b>92.7</b>	<b>531.4</b>	<b>1,239.5</b>	<b>696.6</b>	<b>1,936.1</b>

(a) Comprises health; education, libraries, etc.; welfare and religious institutions; and other community services.

TABLE 12. EMPLOYED PERSONS BY OCCUPATION, VICTORIAN REGIONS, MAY 1993  
(<sup>'000</sup>)

Occupation	Melbourne MSR									Total
	North Western	Outer Western	North Inner	Inner Eastern	Southern	Outer Eastern	South Eastern	Mornington Peninsula		
MALES										
Managers, and administrators	*2.7	12.0	8.5	11.5	24.5	14.1	16.6	9.4	7.5	106.9
Professionals	6.4	10.1	14.5	14.1	28.4	18.0	17.6	8.0	4.5	121.8
Para-professionals	4.8	7.2	*2.7	3.8	6.3	4.9	8.5	4.8	*2.9	46.0
Tradespersons	17.9	29.8	6.8	25.5	21.0	19.2	29.2	22.2	14.6	186.2
Clerks	4.0	9.6	4.5	8.6	9.6	6.9	12.5	6.8	*1.9	64.4
Salespersons, and personal service workers	5.8	10.7	6.7	9.8	10.7	7.8	15.1	8.4	5.6	80.7
Plant, and machine operators and drivers	5.9	16.7	*1.9	13.4	7.2	5.7	11.3	10.2	5.1	77.2
Labourers, and related workers	11.3	23.6	6.7	14.9	8.8	10.2	21.8	16.6	4.9	118.9
<b>Total</b>	<b>58.9</b>	<b>119.7</b>	<b>52.4</b>	<b>101.7</b>	<b>116.5</b>	<b>87.0</b>	<b>132.6</b>	<b>86.3</b>	<b>47.1</b>	<b>802.2</b>
FEMALES										
Managers, and administrators	*1.8	5.0	5.2	*3.3	8.1	*3.2	4.0	3.7	*3.3	37.5
Professionals	5.4	10.4	14.7	9.1	19.3	12.2	11.4	4.9	3.6	91.0
Para-professionals	*1.8	4.3	4.0	4.1	7.6	6.3	6.1	*2.3	*2.1	38.7
Tradespersons	*1.6	3.6	*2.4	*2.3	*3.1	*2.1	*3.5	*2.3	*1.0	22.0
Clerks	17.7	26.5	14.6	21.2	26.5	23.3	30.5	19.4	11.6	191.3
Salespersons, and personal service workers	9.1	20.7	10.6	15.8	13.6	11.6	23.2	12.4	7.5	124.5
Plant, and machine operators and drivers	*1.5	4.3	*1.8	*3.4	*2.3	*2.1	*2.1	4.8	*1.3	23.6
Labourers, and related workers	7.0	10.2	3.6	9.8	5.8	5.7	15.7	12.1	4.2	74.0
<b>Total</b>	<b>45.9</b>	<b>84.8</b>	<b>56.8</b>	<b>69.1</b>	<b>86.4</b>	<b>66.5</b>	<b>96.6</b>	<b>61.9</b>	<b>34.6</b>	<b>602.5</b>
PERSONS										
Managers, and administrators	4.5	16.9	13.7	14.8	32.6	17.3	20.6	13.1	10.9	144.4
Professionals	11.8	20.5	29.2	23.2	47.8	30.2	29.0	12.9	8.1	212.8
Para-professionals	6.6	11.5	6.7	7.9	13.9	11.2	14.6	7.2	5.0	84.6
Tradespersons	19.5	33.4	9.2	27.8	24.1	21.3	32.7	24.6	15.6	208.2
Clerks	21.7	36.0	19.1	29.8	36.1	30.2	43.0	26.2	13.5	255.7
Salespersons, and personal service workers	15.0	31.4	17.2	25.6	24.3	19.5	38.3	20.8	13.1	205.3
Plant, and machine operators and drivers	7.4	21.0	3.7	16.8	9.5	7.8	13.4	14.9	6.3	100.8
Labourers, and related workers	18.3	33.7	10.3	24.8	14.5	16.0	37.5	28.7	9.1	192.9
<b>Total</b>	<b>104.8</b>	<b>204.5</b>	<b>109.2</b>	<b>170.8</b>	<b>202.8</b>	<b>153.5</b>	<b>229.2</b>	<b>148.2</b>	<b>81.7</b>	<b>1,404.7</b>



**TABLE 12. EMPLOYED PERSONS BY OCCUPATION,  
VICTORIAN REGIONS, MAY 1993 - *continued***  
( '000)

Occupation	Balance of Victoria MSR					Total Victoria			
	Barwon- Western District	Central Highlands- Wimmera	Loddon- Campaspe- Mallee	Goulburn- Ovens- Murray	All- Gippsland	Total	Married	Other	Total
<b>MALES</b>									
Managers, and administrators	14.7	10.7	11.7	15.1	10.4	62.6	143.1	26.4	169.4
Professionals	6.8	*4.0	*3.8	6.7	5.0	26.3	110.8	37.3	148.1
Para-professionals	4.2	*2.8	*1.8	*1.7	*3.0	13.5	40.2	19.3	59.5
Tradespersons	24.8	9.0	14.0	16.5	12.5	76.8	158.5	104.4	263.0
Clerks	*2.4	*1.5	*4.0	*2.0	*1.7	11.6	43.5	32.5	76.0
Salespersons, and personal service workers	9.1	*4.0	6.3	4.3	*4.0	27.7	59.6	48.8	108.4
Plant, and machine operators and drivers	10.0	4.8	9.3	7.5	7.0	38.6	85.0	30.8	115.8
Labourers, and related workers	16.9	6.6	11.3	8.4	12.4	55.6	87.1	87.4	174.5
<b>Total</b>	<b>89.0</b>	<b>43.4</b>	<b>62.1</b>	<b>62.2</b>	<b>56.0</b>	<b>312.6</b>	<b>727.7</b>	<b>387.0</b>	<b>1,114.8</b>
<b>FEMALES</b>									
Managers, and administrators	6.2	*3.0	5.5	5.0	5.0	24.8	48.9	13.4	62.3
Professionals	6.6	*3.5	5.2	5.6	5.3	26.2	76.9	40.3	117.2
Para-professionals	4.5	*1.6	*2.5	*3.6	*2.0	14.2	30.7	22.2	52.8
Tradespersons	4.3	*1.2	*1.6	*1.9	*2.4	11.3	18.3	15.0	33.3
Clerks	11.6	5.8	10.6	14.1	8.5	50.5	152.7	89.1	241.8
Salespersons, and personal service workers	16.7	7.6	11.2	11.1	6.3	52.9	91.0	86.4	177.4
Plant, and machine operators and drivers	*1.6	*1.1	*2.0	*1.0	*1.2	6.9	22.5	8.0	30.4
Labourers, and related workers	7.2	*3.7	7.9	7.1	6.2	32.0	70.8	35.3	106.0
<b>Total</b>	<b>58.6</b>	<b>27.5</b>	<b>46.4</b>	<b>49.5</b>	<b>36.7</b>	<b>218.8</b>	<b>511.8</b>	<b>309.6</b>	<b>821.3</b>
<b>PERSONS</b>									
Managers, and administrators	21.0	13.8	17.1	20.1	15.4	87.3	192.0	39.7	231.7
Professionals	13.4	7.5	9.1	12.3	10.2	52.5	187.7	77.6	265.3
Para-professionals	8.7	*4.4	4.2	5.3	5.0	27.7	70.9	41.5	112.3
Tradespersons	29.0	10.2	15.6	18.4	14.9	88.1	176.9	119.4	296.3
Clerks	14.0	7.3	14.6	16.1	10.2	62.1	196.2	121.6	317.8
Salespersons, and personal service workers	25.8	11.6	17.5	15.4	10.3	80.6	150.6	135.2	285.8
Plant, and machine operators and drivers	11.6	5.9	11.2	8.6	8.1	45.5	107.5	38.8	146.3
Labourers, and related workers	24.1	10.3	19.2	15.5	18.6	87.6	157.8	122.7	280.5
<b>Total</b>	<b>147.6</b>	<b>70.9</b>	<b>108.6</b>	<b>111.7</b>	<b>92.7</b>	<b>531.4</b>	<b>1,239.5</b>	<b>696.6</b>	<b>1,936.1</b>

**TABLE 13. EMPLOYED PERSONS BY INDUSTRY AND OCCUPATION BY AGE,  
VICTORIA, MAY 1993  
(<sup>'000</sup>)**

Classification	Age group (years)							Total
	15 - 19	20 - 24	25 - 34	35 - 44	45 - 54	55 - 59	60 and over	
<b>INDUSTRY</b>								
Agriculture, and services to agriculture	*3.7	6.0	12.4	17.3	17.4	6.4	17.2	80.4
Forestry, fishing, and hunting	*0.0	*0.0	*1.0	*0.8	*0.7	*0.0	*0.0	*2.4
Mining	*0.0	*0.0	*1.0	*1.3	*1.0	*0.0	*0.8	*4.1
Manufacturing	14.7	45.8	96.2	89.0	73.5	19.3	10.4	348.8
Food, beverages, and tobacco	*2.2	7.2	14.5	14.1	9.6	*2.6	*1.0	51.3
Textiles, clothing and footwear	*1.7	5.4	11.2	15.6	7.7	*2.4	*1.3	45.2
Metal products	*2.5	6.3	11.6	8.7	9.4	*2.3	*1.0	41.9
Other manufacturing	8.3	26.9	59.0	50.6	46.8	12.0	7.0	210.4
Electricity, gas and water	*0.0	*2.2	5.9	8.6	4.7	*0.9	*0.0	22.3
Construction	6.6	13.0	33.5	31.1	22.7	7.4	*3.1	117.4
Wholesale and retail	54.4	68.6	107.0	92.7	73.0	16.6	13.5	425.9
Wholesale	4.8	19.0	40.4	37.8	26.7	5.6	5.2	139.5
Retail	49.6	49.6	66.6	55.0	46.3	11.0	8.3	286.4
Transport and storage	*2.0	8.7	23.7	23.4	19.4	6.1	*3.6	86.9
Communication	*0.5	4.7	9.0	10.0	5.4	*1.8	*0.0	31.4
Finance, property, and business services	6.9	34.5	77.8	62.3	38.5	8.7	6.7	235.2
Public administration and defense	*1.9	9.1	26.7	24.5	19.4	*4.3	4.9	90.9
Community services	5.4	33.5	87.5	112.5	85.6	16.0	14.7	355.2
Health	*1.9	14.6	35.7	43.0	30.7	6.9	6.4	139.3
Education, museum and library services	*1.4	9.0	30.0	50.3	38.9	7.0	4.6	141.2
Welfare and religious institutions	*1.6	*2.6	7.3	8.3	9.2	*1.7	*2.3	33.1
Other community services	*0.6	7.3	14.5	10.8	6.8	*0.4	*1.3	41.6
Recreational, personal, and other services	16.2	26.9	38.8	26.4	17.9	*4.5	*4.4	135.0
Entertainment and recreational services	*4.1	5.7	10.6	7.8	4.8	*1.8	*1.3	36.1
Restaurants, hotels and clubs	9.9	15.8	16.8	12.0	7.9	*1.5	*1.9	65.8
Personal services (a)	*2.2	5.4	11.3	6.5	5.2	*1.2	*1.3	33.2
<b>Total</b>	<b>112.3</b>	<b>252.9</b>	<b>520.5</b>	<b>499.8</b>	<b>379.4</b>	<b>92.0</b>	<b>79.3</b>	<b>1,936.1</b>
<b>OCCUPATION</b>								
Managers, and administrators	*1.6	6.6	49.3	71.8	65.8	15.7	21.0	231.7
Professionals	*1.2	17.2	84.7	89.8	50.5	10.7	11.1	265.3
Para-professionals	*1.0	13.9	30.3	37.1	23.3	4.7	*2.1	112.3
Tradespersons	18.5	56.6	88.3	59.8	50.9	13.3	8.8	296.3
Clerks	10.3	52.6	92.5	76.2	64.4	12.5	9.2	317.8
Salespersons, and personal service workers	43.9	57.0	69.3	60.9	39.1	9.6	6.0	285.8
Plant, and machine operators and drivers	*2.7	11.6	42.2	39.5	32.1	11.6	6.5	146.3
Labourers, and related workers	33.2	37.3	63.7	64.6	53.2	13.9	14.6	280.5
<b>Total</b>	<b>112.3</b>	<b>252.9</b>	<b>520.5</b>	<b>499.8</b>	<b>379.4</b>	<b>92.0</b>	<b>79.3</b>	<b>1,936.1</b>

(a) Includes private households employing staff.

**TABLE 14. EMPLOYED PERSONS: AVERAGE WEEKLY HOURS WORKED (a) BY INDUSTRY, AND OCCUPATION, VICTORIA, MAY 1993**  
(hours)

Classification	Males			Females			Persons		
	Married	Other	Total	Married	Other	Total	Married	Other	Total
<b>INDUSTRY</b>									
Agriculture, and services to agriculture	53.4	38.8	49.5	25.9	*16.3	25.1	44.1	36.3	42.4
Forestry, fishing, and hunting	*47.0	*50.7	*48.3	*11.8	*0.0	*11.8	*31.0	*50.7	35.7
Mining	37.7	*20.0	35.3	*0.0	*50.0	*50.0	37.7	*30.0	36.3
Manufacturing -	42.7	38.0	41.1	32.8	32.9	32.8	39.6	36.5	38.6
Food, beverages, and tobacco	43.3	41.9	42.8	33.0	33.0	33.0	39.4	38.9	39.2
Textiles, clothing and footwear	47.2	33.1	42.6	36.3	33.3	35.4	40.6	33.2	38.3
Metal products	42.3	41.5	42.0	26.4	*31.6	28.1	39.8	40.2	39.9
Other manufacturing	42.2	36.8	40.4	31.7	32.9	32.1	39.4	35.8	38.2
Electricity, gas and water	40.2	31.1	38.1	*24.2	*37.1	32.2	38.9	33.0	37.2
Construction	43.4	38.9	42.0	19.0	*33.9	20.8	39.4	38.6	39.2
Wholesale and retail -	45.7	34.0	41.0	29.3	26.5	28.1	38.8	30.6	35.4
Wholesale	43.0	39.2	41.9	29.2	36.0	31.9	38.5	37.8	38.3
Retail	47.8	32.1	40.4	29.4	23.5	26.7	39.0	28.1	33.9
Transport and storage	41.3	37.8	40.3	33.3	36.5	34.5	40.0	37.5	39.2
Communication	38.5	37.2	37.9	32.0	30.1	31.2	36.5	35.5	36.0
Finance, property, and business services	42.9	37.8	41.2	27.2	34.9	30.1	36.2	36.4	36.3
Public administration and defense	35.9	36.6	36.1	24.1	29.3	26.3	30.9	32.8	31.6
Community services -	41.8	36.4	40.4	28.9	31.3	29.8	33.4	32.6	33.1
Health	39.1	37.0	38.5	25.9	30.5	27.5	28.7	31.5	29.6
Education, museum and library services	41.9	33.8	40.1	32.8	34.5	33.3	36.3	34.3	35.8
Welfare and religious institutions	54.7	38.7	48.8	28.5	29.4	29.0	35.8	31.1	33.6
Other community services	41.0	39.0	40.5	26.0	26.8	26.3	36.3	33.9	35.6
Recreational, personal, and other services -	44.1	33.3	38.1	25.8	28.5	27.1	33.8	30.9	32.3
Entertainment and recreational services	42.5	34.3	37.8	24.2	31.9	28.6	33.6	33.1	33.4
Restaurants, hotels and clubs	50.3	30.8	38.4	26.9	26.1	26.5	36.2	28.6	32.1
Personal services (b)	36.7	40.2	38.1	24.9	29.1	26.7	30.1	33.4	31.5
<b>Total</b>	<b>43.4</b>	<b>36.4</b>	<b>41.0</b>	<b>28.5</b>	<b>30.3</b>	<b>29.2</b>	<b>37.3</b>	<b>33.7</b>	<b>36.0</b>
<b>OCCUPATION</b>									
Managers, and administrators	52.5	49.5	52.0	39.0	46.2	40.5	49.0	48.4	48.9
Professionals	43.7	41.9	43.2	34.1	35.6	34.6	39.8	38.6	39.4
Para-professionals	39.6	39.0	39.4	25.7	33.5	29.0	33.6	36.1	34.5
Tradespersons	41.6	38.2	40.2	31.0	29.7	30.4	40.5	37.1	39.1
Clerks	36.2	35.2	35.7	26.0	34.2	29.0	28.3	34.4	30.6
Salespersons, and personal service workers	42.9	31.1	37.6	24.9	22.8	23.9	32.0	25.8	29.1
Plant, and machine operators and drivers	42.9	39.2	41.9	35.8	31.2	34.6	41.4	37.5	40.4
Labourers, and related workers	37.6	29.8	33.7	23.8	25.1	24.2	31.4	28.4	30.1
<b>Total</b>	<b>43.4</b>	<b>36.4</b>	<b>41.0</b>	<b>28.5</b>	<b>30.3</b>	<b>29.2</b>	<b>37.3</b>	<b>33.7</b>	<b>36.0</b>

(a) Persons with jobs who did not work during the survey week have been included in the calculation of average weekly hours worked. The relative standard errors of these estimates are obtained by first finding the relative standard error of the estimate of the total number of persons in the estimate and then multiplying by a factor of 0.7. For further information refer technical notes in The Labour Force, Australia (6203.0)(monthly).

(b) Includes private households employing staff.

**TABLE 15. EMPLOYED PERSONS: STATUS OF WORKER AND HOURS WORKED,  
VICTORIA, MAY 1993**

Status of worker	Males			Females			Persons		
	Married	Other	Total	Married	Other	Total	Married	Other	Total
	'000								
Employers	42.7	9.3	52.0	21.0	*2.4	23.4	63.7	11.7	75.4
Self-employed	93.8	32.6	126.4	50.6	8.8	59.4	144.3	41.4	185.7
Wage and salary earners	587.8	337.6	925.4	431.2	296.0	727.3	1,019.0	633.6	1,652.6
Unpaid family helpers (a)	*3.5	7.6	11.1	9.0	*2.3	11.3	12.5	9.9	22.4
<b>Total</b>	<b>727.7</b>	<b>387.0</b>	<b>1,114.8</b>	<b>511.8</b>	<b>309.6</b>	<b>821.3</b>	<b>1,239.5</b>	<b>696.6</b>	<b>1,936.1</b>
AVERAGE WEEKLY HOURS WORKED									
Employers	52.7	49.5	52.1	32.1	36.4	32.6	45.9	46.8	46.1
Self-employed	45.9	46.1	45.9	30.2	29.7	30.2	40.4	42.6	40.9
Wage and salary earners	42.4	35.6	39.9	28.6	30.4	29.3	36.6	33.1	35.3
Unpaid family helpers (a)	27.5	14.4	18.6	8.6	19.3	10.8	13.9	15.5	14.6
<b>Total</b>	<b>43.4</b>	<b>36.4</b>	<b>41.0</b>	<b>28.5</b>	<b>30.3</b>	<b>29.2</b>	<b>37.3</b>	<b>33.7</b>	<b>36.0</b>

(a) Unpaid family helpers who worked 1 hour or more a week in a family business or farm. (b) The relative standard errors of these estimates are obtained by first finding the relative standard error of the estimate of the total number of persons in the estimate and then multiplying by a factor of 0.7. For further information refer technical notes in The Labour Force, Australia (6203.0)

**TABLE 16. UNEMPLOYED PERSONS: INDUSTRY AND OCCUPATION OF LAST JOB(a) BY SEX,  
VICTORIA, MAY 1993**

Particulars	Number ('000)			Unemployment rate (per cent)		
	Males	Females	Persons	Males	Females	Persons
<b>Industry</b>						
Agriculture, forestry, fishing and hunting	7.4	*1.0	8.5	11.2	*4.1	9.3
Manufacturing	24.4	6.8	31.2	9.1	6.0	8.2
Construction	12.6	*0.3	13.0	11.0	*2.0	9.9
Wholesale and retail	16.0	9.4	25.3	6.2	4.8	5.6
Finance, property and business services	5.8	*3.0	8.8	4.2	*2.8	3.6
Public administration and defence	*3.6	*1.8	5.5	*7.0	*4.1	5.7
Community services (b)	4.7	6.8	11.5	4.0	2.7	3.1
Recreational, personal, and other services	8.7	*4.2	12.9	12.0	*5.6	8.7
Other industries (c)	9.5	*1.6	11.1	7.6	*5.3	7.1
<b>Total (a)</b>	<b>92.8</b>	<b>35.0</b>	<b>127.8</b>	<b>7.7</b>	<b>4.1</b>	<b>6.2</b>
<b>Occupation</b>						
Managers, and administrators	*3.7	*0.3	*4.0	*2.1	*0.5	*1.7
Professionals	5.3	*3.5	8.8	3.5	*2.9	3.2
Para-professionals	*3.5	*1.3	4.8	*5.6	*2.4	4.1
Tradespersons	28.8	*1.8	30.6	9.9	*5.0	9.4
Clerks	*3.9	7.9	11.8	*4.9	3.1	3.6
Salespersons, and personal service workers	8.8	10.0	18.9	7.5	5.3	6.2
Plant, and machine operators and drivers	10.6	*3.5	14.1	8.4	*10.3	8.8
Labourers, and related workers	28.1	6.8	34.9	13.9	6.0	11.1
<b>Total (a)</b>	<b>92.8</b>	<b>35.0</b>	<b>127.8</b>	<b>7.7</b>	<b>4.1</b>	<b>6.2</b>
Not employed (a) in the past two years	74.6	68.5	143.1	..	..	..
Looking for first job	24.6	28.9	53.5	..	..	..
Other	49.9	39.7	89.6	..	..	..
Stood down	*1.5	*2.4	*3.9	..	..	..
<b>Total</b>	<b>168.9</b>	<b>105.9</b>	<b>274.8</b>	<b>13.2</b>	<b>11.4</b>	<b>12.4</b>

(a) Full-time job for two weeks or more within the last two years. (b) Comprises health; education, libraries, etc.; welfare and religious institutions; and other community services. (c) Comprises mining; transport and storage; electricity, gas, and water; communication.

TABLE 17. UNEMPLOYED PERSONS BY DURATION OF UNEMPLOYMENT (a),  
VICTORIA, MAY 1993

Particulars	Number ('000)			Percentage distribution		
	Males	Females	Persons	Males	Females	Persons
<b>Duration of unemployment</b>						
(weeks) -						
Under 2	7.2	8.5	15.7	4.3	8.0	5.7
2 and under 4	7.7	6.2	13.9	4.5	5.9	5.1
4 and under 8	9.9	9.9	19.7	5.8	9.3	7.2
8 and under 13	14.2	6.8	21.0	8.4	6.4	7.6
13 and under 26	29.2	23.2	52.4	17.3	21.9	19.1
26 and under 52	25.1	13.3	38.4	14.9	12.6	14.0
52 and under 104	36.6	18.1	54.7	21.7	17.1	19.9
104 and over	39.0	19.8	58.8	23.1	18.7	21.4
<b>Age (years) -</b>						
15 - 19						
Under 13 weeks	8.5	8.3	16.9	5.0	7.9	6.1
13 weeks and under 52	10.3	10.6	20.9	6.1	10.0	7.6
52 weeks and over	*4.3	4.8	9.1	*2.6	4.5	3.3
<b>Total</b>	<b>23.1</b>	<b>23.7</b>	<b>46.9</b>	<b>13.7</b>	<b>22.4</b>	<b>17.1</b>
20 - 24						
Under 13 weeks	6.7	6.2	12.9	4.0	5.9	4.7
13 weeks and under 52	13.0	10.0	23.0	7.7	9.4	8.4
52 weeks and over	13.7	7.8	21.5	8.1	7.4	7.8
<b>Total</b>	<b>33.4</b>	<b>24.0</b>	<b>57.4</b>	<b>19.8</b>	<b>22.7</b>	<b>20.9</b>
25 and over						
Under 13 weeks	23.7	16.9	40.6	14.1	16.0	14.8
13 weeks and under 52	31.0	15.9	47.0	18.4	15.0	17.1
52 weeks and over	57.6	25.3	82.9	34.1	23.9	30.2
<b>Total</b>	<b>112.4</b>	<b>58.1</b>	<b>170.5</b>	<b>66.5</b>	<b>54.9</b>	<b>62.1</b>
<b>Total</b>	<b>168.9</b>	<b>105.9</b>	<b>274.8</b>	<b>100.0</b>	<b>100.0</b>	<b>100.0</b>
<b>DURATION OF UNEMPLOYMENT (WEEKS)</b>						
<b>Average (mean) duration-</b>						
Aged 15 - 19	27.5	33.1	30.3	..	..	..
Aged 20 - 24	56.6	49.8	53.7	..	..	..
Aged 25 and over	72.3	57.2	67.2	..	..	..
<b>All ages</b>	<b>63.1</b>	<b>50.1</b>	<b>58.1</b>	<b>..</b>	<b>..</b>	<b>..</b>
<b>Median duration (b)-</b>						
Aged 15 - 19	19.0	18.0	18.0	..	..	..
Aged 20 - 24	30.0	23.0	28.0	..	..	..
Aged 25 and over	52.0	30.0	45.0	..	..	..
<b>All ages</b>	<b>36.0</b>	<b>22.0</b>	<b>29.0</b>	<b>..</b>	<b>..</b>	<b>..</b>

(a) Period from the time a person began looking for work, or was laid off to the end of the reference week. Periods of unemployment are recorded in complete weeks resulting in a slight understatement of duration of unemployment. (b) For information regarding the calculation of standard errors, refer to technical notes in The Labour Force, Australia (6203.0)(monthly)

EXPLANATORY NOTES

**Introduction**

This publication contains estimates of the civilian labour force derived from the labour force survey component of the monthly population survey. Estimates of the labour force characteristics of family members and of family composition are also included.

**The population survey**

2. The population survey is based on a multi-stage area sample of private dwellings (currently about 29,000 houses, flats, etc.) and a list sample of non-private dwellings (hotels, motels, etc.), and covers about one half of one per cent of the population of Australia. The information is obtained from the occupants of selected dwellings by carefully chosen and specially trained interviewers. The interviews are generally conducted during the two weeks beginning on the Monday between the 6th and 12th of each month. The information obtained relates to the week before the interview (i.e. the reference week).

**Scope**

3. The labour force survey includes all persons aged 15 and over except:

- (a) Members of the permanent defence forces.
- (b) Certain diplomatic personnel of overseas governments, customarily excluded from census and estimated populations.
- (c) Overseas residents in Australia.
- (d) Members of non-Australian defence forces (and their dependants) stationed in Australia.

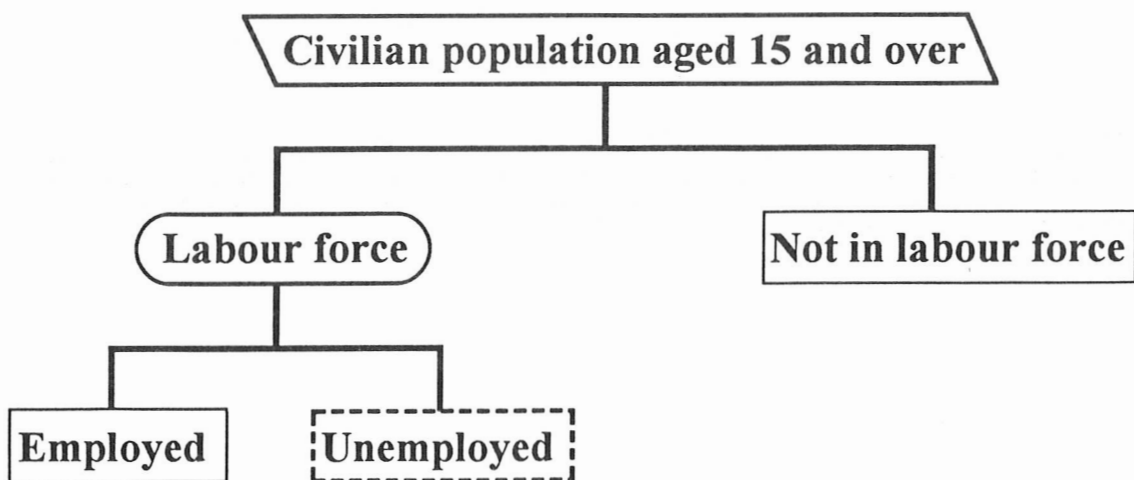
**Coverage**

4. In the labour force survey, coverage rules are applied which aim to ensure that each person is associated with only one dwelling, and hence has only one chance of selection. The coverage rules are, necessarily, a balance between theoretical and operational considerations. Nevertheless, the chance of a person being enumerated at two separate dwellings in the one survey is considered to be negligible. See paragraph 46 for information about the effect of the coverage rules on family statistics.

5. Persons who are away from their usual residence for six weeks or less at the time of interview are enumerated at their usual residence (relevant information may be obtained from other usual residents present at the time of the survey).

**Population benchmarks**

6. Labour force survey estimates of persons employed, unemployed and not in the labour force are calculated in such a way as to add up to the independently estimated distribution of the usually resident population aged 15 and over by age and sex. This procedure compensates for under-enumeration in the survey, and leads to more reliable estimates. Persons who, at the time of interview, are overseas for more than six weeks but for less than twelve months are included in the independent population statistics (benchmarks) and are thus provided for in the calculation of the estimates. The benchmarks are the latest available estimates at the time the labour force survey is conducted, but they usually differ from the official population estimates subsequently published in *Australian Demographic Statistics* (3101.0) because they are derived from incomplete information about population changes.



$$\text{Unemployment rate} = \frac{\text{Unemployed}}{\text{Labour force}} \times 100$$

$$\text{Participation rate} = \frac{\text{Labour force}}{\text{Civilian population aged 15 and over}} \times 100$$

The Labour Force framework, showing the derivation of Unemployment and Participation rates.

### Revision of series

7. Survey estimates are not revised for the usually small amendments of population benchmarks arising from new data on deaths and overseas and internal migration. Revisions are made, however, after each Census of Population and Housing, and when population estimation bases are reviewed. These revisions affect original, seasonally adjusted and trend estimates. The last such revision was made in February 1989 to take account of the results of the 1986 Census of Population and Housing, which affected all the monthly estimates from January 1984 to January 1989. For details, see *Information Paper: Revised Labour Force Survey Estimates: January 1984 to January 1989* (6276.0).

8. Following the change in official population estimates to a place of usual residence basis after the 1981 census, the population benchmarks used in the estimation of labour force survey data are compiled according to place of usual residence. For an explanation of the conceptual basis of population estimates see *Information Paper: Population Estimates: An Outline of The New Conceptual Basis of ABS Population Estimates* (3216.0). To coordinate with the new benchmarks, the labour force survey questionnaire was changed in October 1982 to enable identification of each respondent's place of usual residence. The estimates shown in this publication are based entirely on place of usual residence. Prior to October 1982, the estimates are based on a combination of place of enumeration and place of usual residence.

9. National surveys were conducted in February, May, August and November each year from 1964 to February 1978. The survey has been conducted on a monthly basis since February 1978.

10. The questionnaire used in the survey for the collection of labour force data has been revised from time to time, the latest occasion being for the April 1986 survey. Details of these changes have been published in *Information Paper: Questionnaires Used in the Labour Force Survey* (6232.0) in March 1978, December 1981, August 1984, June 1986, June 1991 and March 1993.

11. In April 1986, the questionnaire was revised following the extension of the definition of employed persons to include persons who worked without pay between 1 and 14 hours per week in a family business or on a farm (i.e. unpaid family helpers). This definition aligned the Australian labour force concepts with the set of definitions adopted by the 13th International Conference of Labour Statisticians in October 1982.

12. Previously, unpaid family helpers who worked 1 to 14 hours, or who had such a job but were not at work, were defined as either unemployed or not in the labour force, depending on whether they were actively looking for work.

13. A revised procedure for weighting families estimates, as presented in this publication, was also introduced in April 1986.

### Comparability of series

14. As noted in paragraph 8, estimates from January 1984 have been revised to conform to revised population estimates following the 1986 Census of Population and Housing, and are thus not strictly comparable with estimates for periods prior to January 1984 which have not been revised. An examination of the revised estimates between June 1981 and June 1986 showed that the effects on labour force survey estimates for the period before January 1984 were inconsequential, and that no meaningful purpose would be served by publishing revised estimates for that period.

15. A revision of estimates to take account of the new definition of marital status was applied back to February 1978. Consequently, estimates of marital status contained in this publication are not comparable with estimates published before the February 1984 issue which classified as married all respondents who reported that they were married or separated. The revision to the marital status classification was undertaken in two parts. First, for all surveys from February 1978, persons who reported that they were separated, were reclassified as not married. Second, from June 1983 onwards, the not married category was expanded to include persons who, although reported as married, did not have a spouse who was a usual resident of the household at the time of the survey. See the Glossary for the definition of marital status now used in the labour force survey.

16. Comparability with estimates produced from the quarterly survey of employment and earnings is affected by the use of a different survey methodology and definitions. The labour force survey provides estimates of people in jobs whereas the survey of employment and earnings provides an estimate of the number of jobs held by wage and salary earners. A more detailed description of the differences between these two series is provided in *Information Paper: Comparison of Employment Estimates from the Labour Force Survey and the Survey of Employment and Earnings* (6263.0).

17. From December 1989 onwards, the category *other families* has been split into *one-parent families* and *other families*. Therefore estimates of *other families* are not strictly comparable with estimates in previous issues. However, in November 1989, 97 per cent of *other families* with dependants were *one-parent families*. For definitions of these terms refer to the Glossary.

#### Survey sample redesign

18. Following each Population Census, the ABS redesigns and reselects the LFS to take into account the new information which is obtained from the Census. The sample used in the LFS from September 1987 to August 1992, which was designed and selected using preliminary data from the 1986 Census, has been updated and reselected using information collected in the 1991 Census. The new sample was phased in over the period September 1992 to December 1992.

19. For the most part, one quarter of the new sample was introduced each month with the entire new sample in place in December 1992. Replacement occurred generally at the rotation group level with two groups being substituted each month. Such a pattern of implementation was followed to ensure that any changes to labour force estimates due to differences between the two samples, or any other influences, were spread over the four months rather than being concentrated in one inter-month period.

20. This phase-in scheme applied to the private dwelling sample in urban areas. The new sample for non-private dwellings and for private dwellings in rural areas was introduced in a single stage in November 1992.

21. The sampling fractions for each State/Territory differ and are such that the resultant sample yields reliable estimates of the main labour force aggregates for each State and Territory. The sampling fraction for Victoria has been changed from 1 in 230 to 1 in 242.

#### Victorian regions

22. In addition to the introduction of the new sampling fraction, the labour force regions have been redesigned. The changes are expected to provide more relevant small area data.

23. The changes are as follows:

(a) Melbourne Major Statistical Region has been expanded to include the whole of the Shires of Cranbourne, Healesville and Pakenham, and part of the Shire of Upper Yarra.

(b) The old Mornington Peninsula Region has been split into two regions: South Eastern Melbourne and the revised Mornington Peninsula region. There was approximately a 4 per cent increase in the population of these aggregated regions due to the changes mentioned in paragraph 23(a). The two new regions are generally but not strictly comparable with the old region *when aggregated*.

(c) The Outer Eastern Melbourne Statistical Region now includes a small part of the old Eastern Victoria region. This results in a small population increase of about 3.5 per cent. As such the series should still be generally but not strictly comparable.

(d) The Eastern Victoria region has been named the All Gippsland region. Due to the partial inclusion of the area covered by the old region in the Outer Eastern Melbourne Region and the corresponding drop in population of about 14 per cent, All Gippsland is not comparable with Eastern Victoria.

(e) The South Western Victoria region has been renamed as the Barwon-Western District region. Data for this region are still comparable.

(f) North Western Victoria and Northern Victoria regions have been replaced by three new regions: Central Highlands-Wimmera, Loddon-Campaspe-Mallee and Goulburn-Ovens-Murray. The three new regions are still comparable with the old two regions *when aggregated*.

24. Detailed maps of the new Labour Force Statistical Regions are presented at the end of this publication. More information on the changes to regional boundaries is available in the *Information Paper: Regional Labour Force Statistics (6262.0)*.

#### Potential effects on labour force survey estimates

25. The initial sampling error for Victorian estimates will rise by about 8 per cent, but will decline gradually over the life of the sample. The standard errors for the estimates of month-to-month movements produced over the period September 1992 to December 1992 are higher compared with those for the corresponding series produced prior to this period and from January 1993 onwards. *In general, these are estimated to be up to 20 per cent higher than the normal standard errors on monthly movements.*



26. Analysis has shown that the unemployment rate is marginally higher (less than 0.5 percentage points on average) for those persons in sample for the first time. Normally, this will not affect the overall estimates of month-to-month movements because the number of persons in sample does not change significantly. However, during the transition period, there were about twice as many persons as usual in sample for the first time. This may have caused a small upward movement (of less than 0.1 percentage points on average) in the unemployment rate from August to September 1992 and a compensating decrease from December 1992 to January 1993.

27. For additional information, see *Information Paper: Labour Force Survey Sample Design (6269.0)*, available from any ABS office.

#### Reliability of the estimates

28. Estimates in this publication are subject to two sources of error:

- (a) Sampling error: since the estimates are based on information obtained from occupants of a sample of dwellings they, and the movements derived from them, may differ from the figures that would have been produced if all dwellings had been included in the survey. One measure of the likely difference is given by the standard error of an estimate. (see paragraphs 30 to 33)
- (b) Non-sampling error: inaccuracies may occur because of imperfections in reporting by respondents and interviewers and errors made in coding and processing data. These inaccuracies may occur in any enumeration, whether it be a full count or a sample. Every effort is made to reduce the non-sampling error to a minimum by careful design of questionnaires, intensive training and supervision of interviewers and efficient operating procedures.

29. As the above problems are compounded when the statistics are disaggregated to regional data, users are particularly advised to treat month-to-month movements for regional data with caution. (See the following paragraphs for more detail on determining the reliability of month-to-month movements.)

#### Standard error tables

30. To assist you in determining the reliability of the various estimates contained in this publication, tables of standard errors of level estimates and month to month movements are included.

31. Use the table of standard errors of level estimates to determine the accuracy of most estimates contained in this publication. Use the tables of month to month movements to determine the accuracy of estimates when comparing one month's figures with another. This is particularly important with month-to-month movements in determining *whether or not the estimates indicate that a significant change has occurred.*

32. To use the tables, locate the figure in the *Size of estimate* column which is nearest in value to the estimate you wish to use. If you are comparing movements use the largest estimate. Read across the table until you find the column for the geographic area covered by the estimate concerned. This figure is one standard error.

33. There are approximately two chances in three that the true value which the estimate is attempting to measure is within plus or minus one standard error of the estimate. There are approximately nineteen chances in twenty that the true value is within plus or minus twice this amount.

34. A similar technique is used for month-to-month movements of estimates. After finding the standard error of the larger of the two estimates from the table of month-to-month movements of estimates (as in paragraph 32) compare the movement to one standard error; if the movement is larger then this indicates a likelihood that a change has occurred. If the movement is larger than two standard errors then this is a fairly reliable indicator of the change.

35. If comparing quarterly movements multiply the standard error by a factor of 1.1 before comparing it to the movement. If comparing annual movements multiply by a factor of 1.3 before making the comparison.

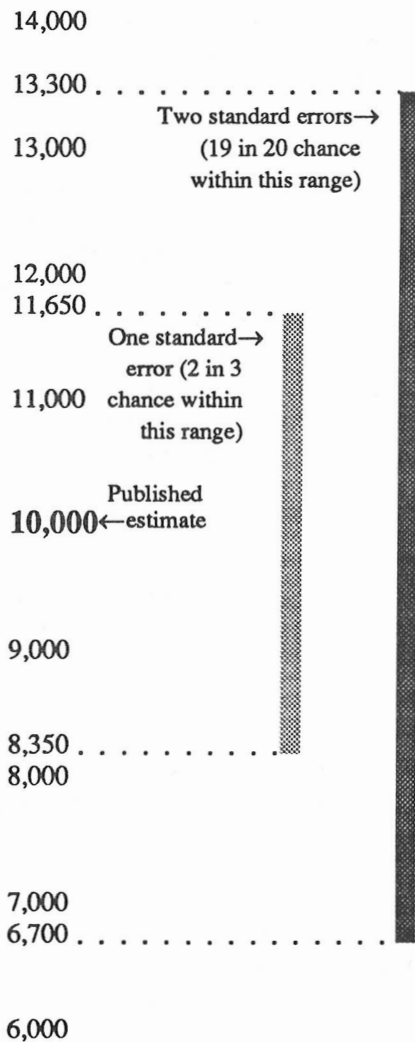
36. Another useful measure of reliability is relative standard error (RSE). The relative standard error of an estimate is the amount by which an estimate is likely to vary (one standard error) as a percentage of its size.

37. To calculate the relative standard error of an estimate, divide one standard error of the estimate by the estimate and multiply by 100.

38. Estimates with a relative standard error of 10 per cent or less can be regarded as statistically reliable enough for most uses. Estimates with a relative standard error of 25 per cent or more should not be regarded as reliable and care should be exercised when using them. All such estimates in this publication have been marked with an asterisk (\*).

39. For this survey this warning applies to estimates of 4,600 or less for Victoria. Different geographic areas have different points at which the 25 per cent relative standard error cut off takes effect. These are listed in Table A.

One Standard error on a published estimate of 10,000 is 1,650. The diagram shows the probable location of the true value which the estimate is attempting to measure.



**Differences between population census and population survey estimates**

40. The results of the 1986 Census of Population and Housing show that labour force estimates derived from the census differ from those derived from the labour force surveys.

41. The broad concepts underlying the measures of the labour force and its components, employment and unemployment, are similar in the census and the surveys. It should be noted, however, that census estimates of unemployment do not take into account the 'available for work' criterion.

42. There are considerable differences in both the collection methodology adopted (including the detailed questions asked) and estimation procedures. Factors contributing to differences in estimates include under-enumeration in the population census for which census labour force estimates have not been adjusted, the use in the labour force survey of population benchmarks derived from incomplete information about population change (see paragraph 6), the inclusion of permanent defence forces in census estimates, the personal interview approach adopted in the survey as opposed to self-enumeration of census schedules, differing questions used to determine labour force characteristics (particularly the identification of unemployed persons) and differing methods of adjustment for non-response to the survey or census.

43. The labour force survey provides detailed and up-to-date estimates of employment and unemployment for Australia, States and regions, whereas the Census of Population and Housing provides counts for small areas but in less detail than is available from the survey.

44. These considerations should be borne in mind when comparisons are made between population census and labour force survey estimates.

**Seasonal adjustment**

45. Seasonally adjusted series are published in Table 2. Seasonal adjustment is a means of removing the estimated effects of normal seasonal variation from the series so that the effects of other influences on the series can be recognised more clearly. Seasonal adjustment does not remove the irregular or non-seasonal influences which may be present in any particular month. This means that month-to-month movements of the seasonally adjusted estimates may not be reliable indicators of trend behaviour. For example, irregular factors unrelated to the trend account for more than half the seasonally adjusted movement with the following frequency:

- (a) Employment: 5 in 10 monthly movements
- (b) Unemployment: 7 in 10 monthly movements
- (c) Unemployment rate: 7 in 10 monthly movements
- (d) Participation rate: 9 in 10 monthly movements

46. The seasonal factors for all seasonally adjusted series are reviewed annually to take account of each additional year's original data. The latest review, in February 1993, revised the Australian and State seasonally adjusted and trend monthly series back to February 1978. Information about the method of adjustment and revised seasonally adjusted and trend estimates for all months since January 1986 for Australia and the States were published in an Appendix to the February 1993 issue of *The Labour Force, Australia* (6203.0)

#### Trend estimation

47. Smoothing seasonally adjusted series produces a measure of trend by removing the impact of the irregular component of the series. The trend estimates are derived by applying a 13-term Henderson weighted moving average to the respective seasonally adjusted series. These trend series are used to analyse the underlying behaviour of the series over time. Table 3 shows trend estimates for the past 15 months. Data from February 1978 are available on the ABS on-line data dissemination service, PC-AUSSTATS. The trend series of the participation rate for married females are based on smoothed population estimates.

48. While this smoothing technique enables estimates to be produced which include the latest month, it does result in revisions to the most recent months as additional observations become available. Generally, subsequent revisions become smaller, and after three months have a negligible impact on the series. There will also be revisions as a result of the annual review of seasonal factors mentioned above in paragraph 40.

49. Users may wish to refer to the ABS Information Papers *A Guide to Smoothing Time Series - Estimates of 'Trend'* (1316.0), and *Time Series Decomposition - An Overview* (1317.0) for more detailed information on producing trend estimates by smoothing seasonally adjusted time series data.

#### Labour force status and other characteristics of families

50. As a part of survey procedures, family relationships are determined each month, enabling both the estimation of persons cross-classified by their

family status and the estimation of families. This publication contains tables showing the labour force status and family status of individuals and families.

51. Because of the coverage rules, persons who usually live with other members of their family may, at the time of the survey, be enumerated as not living with all the usual members of their family. This situation is more likely for persons who are enumerated as visitors to other private dwellings or as persons staying in non-private dwellings (hotels, hospitals, etc.). The determination of family structure and family characteristics in such cases is difficult. Thus for survey questions used to determine family relationships, scope was further restricted to usual residents of private dwellings and the following persons were excluded:

- (a) All persons enumerated in non-private dwellings (including hotels, motels, hospitals and other institutions).
- (b) Persons enumerated as visitors to (rather than usual residents of) private dwellings.

52. In addition, in those households where it was not possible to obtain information relating to all the usual residents, no family information was recorded. Thus persons living in households which include a member of the permanent defence forces, who is outside the scope of the population survey, are excluded from survey questions used to determine family relationships because family information could not be obtained from each usual resident. Similarly households which, at the time of the survey, have one or more of their usual residents away for more than six weeks, are excluded from the family survey. This also applies to households from which an incomplete or inadequate questionnaire was obtained for any usual resident in on scope and coverage. Generally, family status is determined for more than 90 per cent of all civilians aged 15 and over.

53. Estimates of the number of families in this publication differ from those in publications prior to the April 1986 issue. This is due to the adoption of a new weighting procedure where the weight for a family is determined using an average of the weights for all family members responding to the labour force survey. Previously, the weight used to derive estimates of the number of families was determined by nomination of a proxy 'head of household' as representative of the family.

**Birthplace**

54. From April 1991, labour force birthplace data are aggregated according to major groups of the *Australian Standard Classification of Countries for Social Statistics (ASCCSS)* (1269.0). The ASCCSS was developed by the ABS for use whenever demographic, labour and social statistics are classified by countries.

55. The ASCCSS major groups are based on the concept of geographic proximity. They differ from the country groups presented in this publication prior to April 1991. For example, African countries are now covered by 'The Middle East and North Africa' and 'Africa (excluding North Africa)'. Data for selected individual countries will continue to be available in this publication and comprehensively on microfiche.

**Other data available**

56. Estimates of the civilian labour force are available for regions other than those shown in this publication. These estimates are available in various publications produced by other State offices of the ABS. These data are also available on microfiche or as a special data service. For details contact any ABS office.

57. Results of this survey at National and State levels are published in *The Labour Force, Australia* (6203.0) every month. Preliminary survey results are published in advance of this more detailed publication in *The Labour Force, Australia, Preliminary* (6202.0).

58. Although emphasis in the population survey is placed on the regular collection of specific data on demographic and labour force characteristics of the population, supplementary and special surveys of particular aspects of the labour force or of other subjects are carried out from time to time. Statistics from these surveys are published and are available on request. A list of survey publications on labour force and related topics is shown below.

**Related publications**

59. Users may also wish to refer to the following publications, available on request:

*Australian Standard Classification of Countries for Social Statistics* (1269.0) (irregular) (\$35.00)

*Labour Statistics, Australia* (6101.0) (annual) (\$35.00)

*A Guide to Labour Statistics, Australia* (6102.0) (irregular) (\$25.00)

*The Labour Force, Australia, Preliminary* (6202.0) (monthly) (\$10.70)

*The Labour Force, Australia* (6203.0) (monthly) (\$16.30)

*Labour Force Status and Other Characteristics of Families, Australia* (6222.0) (annual) (\$12.70)

*Employment, Underemployment and Unemployment, Australia* (6246.0) (annual) (\$20.40)

*Australian Labour Market* (6284.0) (annual) (\$5.00)

*Labour Force Experience, Australia* (6206.0) (annual) (\$12.70)

*Labour Mobility, Australia* (6209.0) (annual) (\$12.50)

*Persons Not in the Labour Force, Australia* (6220.0) (annual) (\$12.70)

*Job Search Experience of Unemployed Persons, Australia* (6222.0) (annual) (\$12.70)

*Transition from Education to Work, Australia* (6227.0) (annual) (\$12.70)

*Labour Force Status and Educational Attainment, Australia* (6235.0) (annual) (\$12.70)

*Participation in Education, Australia* (6272.0) (annual) (\$12.70)

*Labour Force Projections, Australia* (6260.0) (irregular) (\$15.00)

*Information Paper: Questionnaires Used in the Labour Force Survey* (6232.0) (irregular) (free)

*Information Paper: Regional Labour Force Statistics* (6262.0) (irregular) (free)

*Information Paper: Labour Force Survey Sample Design* (6269.0) (free)

*Information Paper: Measuring Employment and Unemployment* (6279.0)

**Symbols and other usages**

n.a. not available

n.e.c. not elsewhere classified

.. not applicable

r revised

\* subject to sampling variability too high for most practical purposes

61. Where figures have been rounded, discrepancies may occur between sums of the component items and totals.

**STUART JACKSON**

*Deputy Commonwealth Statistician*

## GLOSSARY

*Employed:* Persons aged 15 years and over who, during the reference week:

- (a) worked for one hour or more for pay, profit, commission, or payment in kind in a job or business, or on a farm (including employees, employers, and self-employed persons); or
- (b) worked for one hour or more without pay in a family business or on a farm (i.e. unpaid family helper); or
- (c) were employees who had a job but were not at work and were:
  - (i) on paid leave;
  - (ii) on leave without pay for less than four weeks up to the end of the reference week;
  - (iii) stood down without pay because of bad weather or plant breakdown at their place of employment for less than four weeks, up to the end of the reference week;
  - (iv) on strike or locked out;
  - (v) on workers' compensation and expected to be returning to their job; or
  - (vi) receiving wages or salary while undertaking full-time study; or
- (d) were employers, self-employed persons or unpaid family helpers who had a job, business, or farm, but were not at work.

*Family:* Two or more related persons (including relationships by blood, marriage or adoption) usually resident in the same household at the time of the survey. A family comprises a married couple or a sole parent, together with any persons having the following relationships to them:

- (a) Sons or daughters of any age, if not married and with no children present;
- (b) other relatives if not accompanied by a spouse, sons or daughters, or parents of their own aged under 15 present; or
- (c) any children under 15 years of age who do not have a parent present.

*Full-time workers:* Employed persons who usually work 35 hours or more a week in all jobs and others who, although usually working less than 35 hours a week, worked 35 hours or more during the reference week.

*Hours of work:* The figures of aggregate hours and average hours refer to actual hours worked during the reference week, not hours paid for.

*Industry:* Classified according to the *Australian Standard Industrial Classification (ASIC), 1983*. (1201.0 and 1202.0)

*Labour force:* For any group, comprises persons who, during the reference week, were employed or unemployed, as defined.

*Marital status:* In the labour force survey, persons are classified as married or not married, as follows:

- (a) Persons are classified as married, if they are reported as being married (including de facto) and their spouse was a usual resident of the household at the time of the survey.
- (b) Persons are classified as not married if they have never been married; are separated, widowed or divorced or who are reported as being married, but their spouse was not a usual resident of the household.

*Not in the labour force:* Persons who, during the reference week, were not in the categories 'employed' or 'unemployed', as defined.

*Occupation:* Classified according to the *Australian Standard Classification of Occupations (ASCO), 1986*. (1222.0) Occupational data classified to ASCO were introduced for the August 1986 survey, replacing the Classification and Classified List of Occupations, Revised, November 1980 used in previous surveys.

*Participation rate:* For any group, the number of persons in the labour force expressed as a percentage of the civilian population aged 15 years and over in the same group.

*Part-time workers:* Employed persons who usually work less than 35 hours a week and who did so during the reference week.

*Status of worker:* Employed persons are classified according to whether they are an employer, self-employed person, wage and salary earner (employee), or unpaid family helper (who worked one hour or more in the reference week).

*Unemployed:* Persons aged 15 years and over who were not employed during the reference week, and:

- (a) had actively looked for full-time or part-time work at any time in the four weeks up to the end of the reference week and were:
  - (i) available for work in the reference week, or would have been available except for temporary illness (i.e. lasting for less than four weeks to the end of the reference week); or
  - (ii) waiting to start a new job within four weeks from the end of the reference week and would have started in the reference week if the job had been available then; or
- (b) were waiting to be called back to a full-time or part-time job from which they had been stood down without pay for less than four weeks up to the end of the reference week (including the whole of the reference week) for reasons other than bad weather or plant breakdown.

*Unemployment rate:* For any group, the number of unemployed persons expressed as a percentage of the labour force in the same group.

TABLE A: STANDARD ERRORS OF LEVEL ESTIMATES, VICTORIAN LABOUR FORCE REGIONS, SEPTEMBER 1992 ONWARDS

Size of estimate	Victoria; Melbourne MSR; Balance of Victoria MSR	North Western Melbourne	Outer Western Melbourne	Inner Melbourne	North Eastern Melbourne	Inner Eastern Melbourne	Southern Melbourne	Outer Eastern Melbourne	South Eastern Melbourne; Mornington Peninsula	Barwon-Western District	Central Highlands-Wimmera	All Gippsland	Loddon-Campaspe-Mallee; Goulburn-Ovens-Murray
	300	290	230	230	250	250	240	270	260	250	270	290	290
500	380	300	300	330	330	310	350	330	320	350	370	370	350
700	450	360	350	390	390	370	420	400	380	420	440	440	420
1,000	540	430	420	460	460	440	500	480	450	500	530	530	500
1,500	670	530	520	570	570	550	620	590	560	610	660	650	610
2,000	770	610	600	660	660	630	720	680	640	710	760	760	710
2,500	860	690	680	740	740	710	810	760	720	800	850	850	800
3,000	940	750	740	810	810	780	890	830	790	880	940	930	880
4,000	1,100	870	860	940	940	900	1,050	970	920	1,000	1,100	1,100	1,000
5,000	1,200	980	970	1,050	1,050	1,000	1,150	1,100	1,050	1,150	1,200	1,200	1,150
7,000	1,400	1,150	1,150	1,250	1,250	1,200	1,350	1,300	1,250	1,350	1,450	1,450	1,350
10,000	1,650	1,400	1,400	1,500	1,500	1,450	1,650	1,550	1,500	1,650	1,750	1,750	1,650
15,000	2,000	1,750	1,700	1,850	1,850	1,800	2,050	1,900	1,850	2,000	2,150	2,150	2,000
20,000	2,250	2,000	2,000	2,150	2,200	2,100	2,350	2,250	2,100	2,350	2,500	2,500	2,350
30,000	2,700	2,500	2,450	2,700	2,700	2,550	2,900	2,750	2,600	2,900	3,100	3,050	2,900
50,000	3,300	3,250	3,200	3,500	3,500	3,350	3,800	3,600	3,450	3,800	4,050	4,000	3,800
70,000	3,800	3,900	3,850	4,200	4,200	4,000	4,550	4,300	4,100	4,500	4,850	4,800	4,500
100,000	4,400	4,700	4,650	5,100	5,100	4,850	5,500	5,200	4,950	5,500	5,800	5,800	5,500
150,000	5,200	5,800	5,700	6,300	6,300	6,000	6,800	6,400	6,100	6,800	7,200	7,200	6,800
200,000	5,800	6,800	6,700	7,300	7,300	7,000	8,000	7,500	7,100	7,900	8,400	8,400	7,900
300,000	6,700	8,400	8,300	9,100	9,100	8,700	9,900	9,300	8,900	9,800	10,400	10,400	9,800
500,000	8,100	11,100	10,900	11,900	12,000	11,400	13,000	12,300	11,700	12,900	13,700	13,600	12,900
1,000,000	10,400												
2,000,000	13,100												
5,000,000	17,600												
25% RSE	4,600	3,000	2,900	3,500	3,600	3,200	4,200	3,700	3,400	4,100	4,700	4,700	4,200

RSE = Relative Standard Error.

MSR = Major Statistical Region.

**TABLE B: STANDARD ERRORS OF MONTH TO MONTH MOVEMENTS,  
VICTORIAN LABOUR FORCE REGIONS, JANUARY 1993 ONWARDS**

Size of estimate	Victoria; Balance of Victoria MSR;							South Eastern;	Barwon-	Central			Loddon- Campaspe- Mallee;
	Melbourne MSR	North Western	Outer Western	Inner	North Eastern	Inner Eastern	Southern	Outer Eastern	Mornington Peninsula	Western District	Highlands- Wimmera	All Gippsland	Ovens- Murray
300	380	170	210	220	200	210	210	210	230	210	230	230	230
500	460	220	260	270	250	270	260	260	280	260	280	290	280
700	510	250	300	310	290	310	300	300	330	300	330	340	330
1,000	590	290	350	370	340	360	350	350	380	350	380	400	380
1,500	680	350	420	440	400	430	420	420	450	420	460	470	460
2,000	760	390	470	500	460	490	480	480	520	470	520	540	520
2,500	820	430	520	550	500	540	520	520	570	520	570	590	570
3,000	880	470	560	590	540	580	570	570	610	560	620	640	620
4,000	980	530	640	670	620	660	640	640	700	640	700	730	700
5,000	1,050	580	700	740	680	730	710	710	770	700	770	800	770
7,000	1,200	680	820	850	790	840	820	820	890	810	890	930	890
10,000	1,350	790	950	1,000	920	980	960	960	1,050	950	1,050	1,100	1,050
15,000	1,600	940	1,150	1,200	1,100	1,150	1,150	1,150	1,250	1,150	1,250	1,300	1,250
20,000	1,750	1,050	1,300	1,350	1,250	1,350	1,300	1,300	1,400	1,300	1,400	1,450	1,400
30,000	2,050	1,250	1,550	1,600	1,500	1,600	1,550	1,550	1,650	1,500	1,700	1,750	1,700
50,000	2,450	1,600	1,900	2,000	1,850	1,950	1,900	1,900	2,100	1,900	2,100	2,200	2,100
70,000	2,800	1,850	2,200	2,300	2,150	2,300	2,250	2,200	2,400	2,200	2,450	2,550	2,450
100,000	3,200	2,150	2,600	2,700	2,500	2,650	2,600	2,600	2,800	2,550	2,850	2,950	2,850
150,000	3,700	2,550	3,100	3,200	2,950	3,200	3,100	3,100	3,350	3,050	3,400	3,550	3,400
200,000	4,100	2,900	3,500	3,650	3,350	3,600	3,500	3,500	3,800	3,450	3,850	4,000	3,800
300,000	4,800	3,450	4,150	4,350	4,000	4,300	4,200	4,150	4,500	4,150	4,550	4,800	4,550
500,000	5,800	4,300	5,200	5,400	5,000	5,400	5,200	5,200	5,600	5,200	5,700	6,000	5,700
1,000,000	7,400												
2,000,000	9,600												
5,000,000	13,400												

MSR = Major Statistical Region.

NOTE: When comparing quarterly movements multiply standard error by 1.1  
When comparing annual movements multiply standard error by 1.3

**TABLE C: STANDARD ERRORS OF MONTH TO MONTH MOVEMENT ESTIMATES, VICTORIA**

<i>Size of Estimate</i>	<i>January 1988 to September 1992</i>	<i>September 1992</i>	<i>October 1992</i>	<i>November 1992</i>	<i>December 1992</i>	<i>January 1993 onwards</i>
300	370	420	420	470	470	380
500	440	510	510	560	560	460
700	500	580	580	640	640	510
1,000	570	660	660	730	730	590
1,500	660	770	770	850	850	680
2,000	740	850	850	940	940	760
2,500	800	920	920	1,000	1,000	820
3,000	860	990	990	1,100	1,100	880
4,000	950	1,100	1,100	1,200	1,200	980
5,000	1,050	1,200	1,200	1,300	1,300	1,050
7,000	1,170	1,350	1,350	1,500	1,500	1,200
10,000	1,350	1,550	1,550	1,700	1,700	1,350
15,000	1,550	1,800	1,800	1,950	1,950	1,600
20,000	1,700	2,000	2,000	2,200	2,200	1,750
30,000	2,000	2,300	2,300	2,550	2,550	2,050
50,000	2,400	2,800	2,800	3,050	3,050	2,450
70,000	2,700	3,150	3,150	3,450	3,450	2,800
100,000	3,100	3,600	3,600	3,950	3,950	3,200
150,000	3,600	4,150	4,150	4,600	4,600	3,700
200,000	4,000	4,650	4,650	5,100	5,100	4,100
300,000	4,650	5,400	5,400	5,900	5,900	4,800
500,000	5,600	6,500	6,500	7,200	7,200	5,800
1,000,000	7,300	8,400	8,400	9,200	9,200	7,400
2,000,000	9,400	10,800	10,800	11,900	11,900	9,600
5,000,000	13,100	15,100	15,100	16,700	16,700	13,400

NOTE: When comparing quarterly movements multiply standard error by 1.1  
When comparing annual movements multiply standard error by 1.3

**TABLE D: 25 PER CENT RELATIVE STANDARD ERROR CUTOFF LEVELS, STATES AND AUSTRALIA, SEPTEMBER 1992 ONWARDS**

<i>Region</i>	<i>Person estimates</i>	<i>Hours worked</i>	<i>Average hours worked</i>	<i>Average duration of unemployment</i>	<i>Median duration of unemployment</i>
New South Wales	5,300	7,400	2,700	8,600	18,800
Victoria	4,600	6,500	2,300	7,500	16,500
Queensland	3,500	5,000	1,800	5,800	12,600
South Australia	2,400	3,400	1,300	4,000	8,600
Western Australia	2,900	4,000	1,500	4,600	9,900
Tasmania	1,300	1,800	700	2,100	4,400
Northern Territory	1,300	1,800	700	2,100	4,700
Australian Capital Territory	1,000	1,300	500	1,500	3,200
Australia	4,000	5,700	1,900	6,800	15,800
Standard error factor	..	1.2	0.7	1.3	2.0

NOTE: Relative standard errors of estimates of *hours worked*, *average hours worked*, *average duration of unemployment* and *median duration of unemployment* are obtained by first finding the relative standard error of the total number of persons contributing to the estimate (from Table A) and then multiplying that figure by the listed standard error factor.



## STATISTICAL LOCAL AREA COMPOSITION OF STATISTICAL REGIONS

### Melbourne MSR

#### **Outer Western**

Melbourne SR  
Altona (C)  
Essendon (C)  
Footscray (C)  
Keilor (C)  
Melton (S)  
Sunshine (C)  
Werribee (C)  
Williamstown (C)

#### **North Western**

Melbourne SR  
Broadmeadows (C)  
Brunswick (C)  
Bulla (S)  
Coburg (C)

#### **Inner Melbourne SR**

Collingwood (C)  
Fitzroy (C)  
Melbourne (C)  
    Inner  
    Remainder  
Port Melbourne (C)  
Prahran (C)  
Richmond (C)  
St Kilda (C)  
South Melbourne (C)

#### **North Eastern**

Melbourne SR  
Diamond Valley (S)  
Eltham (S)  
Heidelberg (C)  
Northcote (C)  
Preston (C)  
Whittlesea (C)

#### **Inner Eastern**

Melbourne SR  
Box Hill (C)  
Camberwell (C)  
Doncaster and  
    Templestowe (C)  
Hawthorn (C)  
Kew (C)  
Waverley (C)

#### **Southern Melbourne SR**

Brighton (C)  
Caulfield (C)  
Moorabbin (C)  
Mordialloc (C)  
Oakleigh (C)  
Sandringham (C)

#### **Outer Eastern**

Melbourne SR  
Croydon (C)  
Healesville (S)  
Knox (C)  
Lillydale (S)  
Nunawading (C)  
Ringwood (C)  
Sherbrooke (S)  
Upper Yarra (S) (Pt A)

#### **South Eastern**

Melbourne SR  
Berwick (C)  
Cranbourne (S)  
Dandenong (C)  
Pakenham (S)  
Springvale (C)

#### **Mornington Peninsula SR**

Chelsea (C)  
Flinders (S)  
Frankston (C)  
Hastings (S)  
Mornington (S)

### Balance of Victoria MSR

#### **Barwon-Western District SR**

Bannockburn (S) (Pt A & B)  
Barrabool (S) (Pt A & B)  
Belfast (S)  
Bellarine (RC) (Pt A & B)  
Camperdown (T)  
Colac (C)  
Colac (S)  
Corio (S) (Pt A & B)  
Dundas (S)  
Geelong (C)  
Geelong West (C)  
Glenelg (S)  
Hamilton (C)  
Hampden (S)  
Heytesbury (S)  
Heywood (S)  
Lady Julia Percy & Towerhill  
Leigh (S)  
Minhamite (S)  
Mortlake (S)  
Mount Rouse (S)  
Newtown (C)  
Otway (S)  
Port Fairy (B)  
Portland (C)  
Queenscliffe (B)  
South Barwon (C) (Pt A & B)  
Wannon (S)  
Warrnambool (C)  
Warrnambool (S)  
Winchelsea (S)

#### **Central Highlands-**

**Wimmera SR**  
Arapiles (S)  
Ararat (C)  
Ararat (S)  
Avoca (S)  
Bacchus Marsh (S)  
Ballarat (C)  
Ballan (S)  
Ballarat (S) (Pt A & B)  
Bungaree (S) (Pt A & B)  
Buninyong (S) (Pt A & B)  
Creswick (S)  
Daylesford & Glenlyon (S)  
Dimboola (S)  
Donald (S)  
Dunmunkle (S)  
Grenville (S) (Pt A & B)  
Horsham (C)  
Kaniva (S)  
Kara Kara (S)  
Kowree (S)  
Lexton (S)  
Lowan (S)  
Ripon (S)  
St Arnaud (T)  
Sebastopol (B)  
Stawell (C)  
Stawell (S)  
Talbot & Clunes (S)  
Warracknabeal (S)  
Wimmera (S)

#### **Loddon-Campaspe-**

**Mallee SR**  
Bendigo (C)  
Bet Bet (S)  
Birchip (S)  
Castlemaine (C)  
Charlton (S)  
Cohuna (S)  
Eaglehawk (B)  
East Loddon (S)  
Echuca (C)  
Gisborne (S)  
Gordon (S)  
Huntley (S) (Pt A & B)  
Karkaroc (S)  
Kerang (B)  
Kerang (S)  
Korong (S)  
Kyneton (S)  
McIvor (S)  
Maldon (S)  
Marong (RC) (Pt A & B)  
Maryborough (C)  
Metcalf (S)  
Mildura (C)  
Mildura (S) (Pt A & B)  
Newham & Woodend (S)  
Newstead (S)  
Pyalong (S)  
Rochester (S)  
Romsey (S)  
Strathfieldsaye (S) (Pt A & B)  
Swan Hill (C)  
Swan Hill (S)  
Tullaroop (S)  
Walpeup (S)  
Whycheproof (S)

#### **Goulburn-Ovens-**

**Murray SR**  
Alexandra (S)  
Beechworth (S)  
Benalla (C)  
Benalla (S)  
Bright (S)  
Broadford (S)  
Chiltern (S)  
Cobram (S)  
Deakin (S)  
Euroa (S)  
Goulburn (S)  
Kilmore (S)  
Kyabram (T)  
Mansfield (S)  
Myrtleford (S)  
Nathalia (S)  
Numurkah (S)  
Oxley (S)  
Rodney (S) (Pt A & B)  
Rutherglen (S)  
Seymour (S)  
Shepparton (C)  
Shepparton (S) (Pt A & B)  
Tallangatta (S) (Pt A & B)  
Tungamah (S)  
Upper Murray (S)  
Violet Town (S)  
Wangaratta (C)  
Wangaratta (S)  
Waranga (S)  
Wodonga (RC)  
Yackandandah (S)  
Yarrowonga (S)  
Yea (S)

#### **All Gippsland SR**

Alberton (S)  
Avon (S)  
Bairnsdale (C)  
Bairnsdale (S) (Pt A & B)  
Bass (S)  
Bass Strait Islands  
Buln Buln (S)  
French Island  
Korumburra (S)  
Maffra (S)  
Mirboo (S)  
Moe (C)  
Morwell (C) (Pt A & B)  
Narracan (S) (Pt A & B)  
Off Shore Areas & Migratory  
Omeo (S)  
Orbost (S)  
Phillip Island (S)  
Rosedale (S)  
Sale (C)  
South Gippsland (S)  
Tambo (S) (Pt A & B)  
Traralgon (C)  
Traralgon (S) (Pt A & B)  
Upper Yarra (S) (Pt B)  
Warragul (S)  
Wonthaggi (B)  
Woorayl (S)  
Yallourn Works Area

# VICTORIA

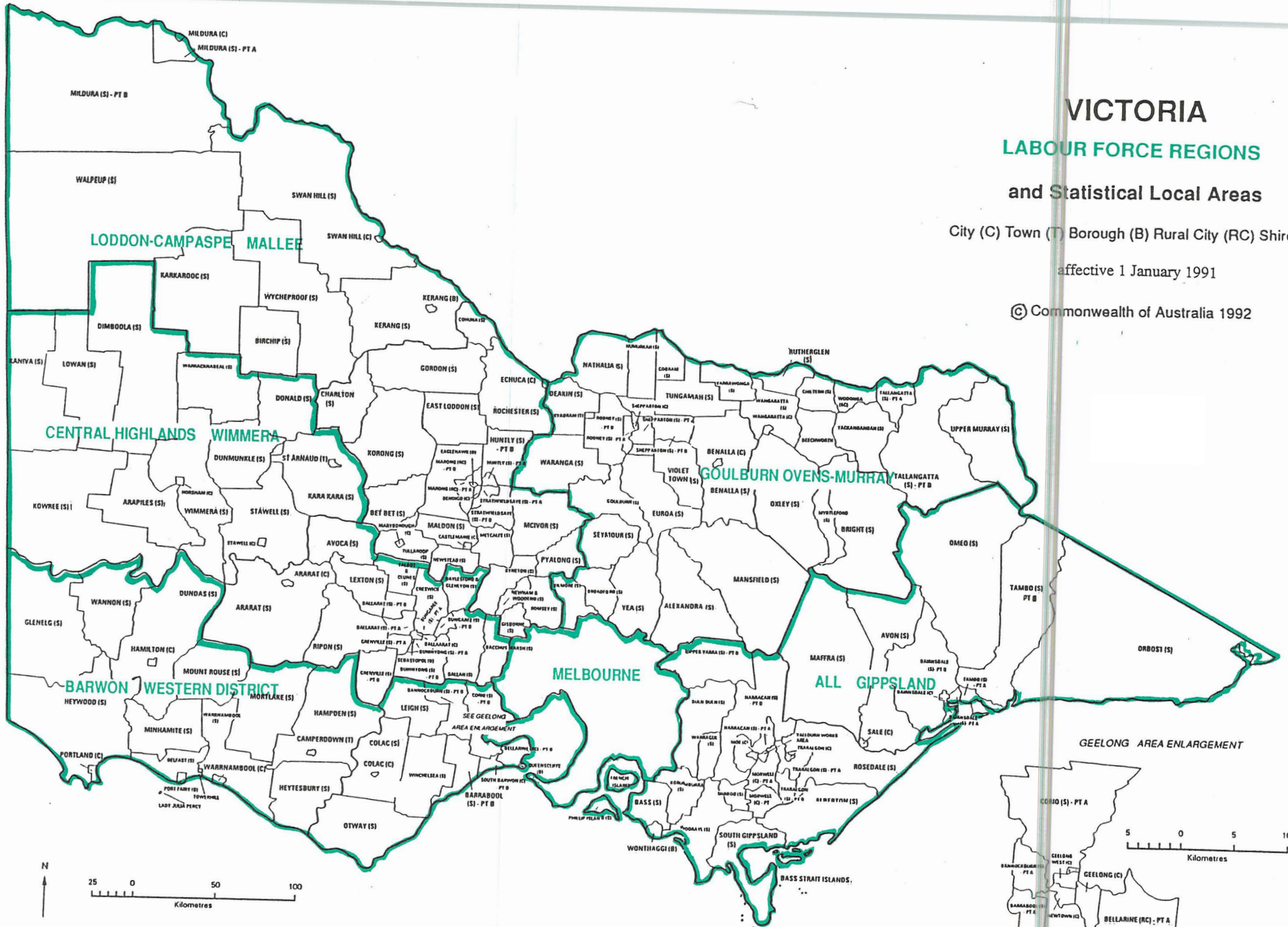
## LABOUR FORCE REGIONS

### and Statistical Local Areas

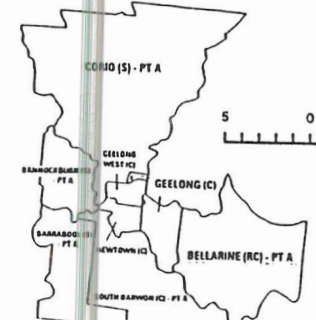
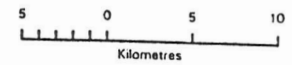
City (C) Town (T) Borough (B) Rural City (RC) Shire (S)

effective 1 January 1991

© Commonwealth of Australia 1992



GEELONG AREA ENLARGEMENT





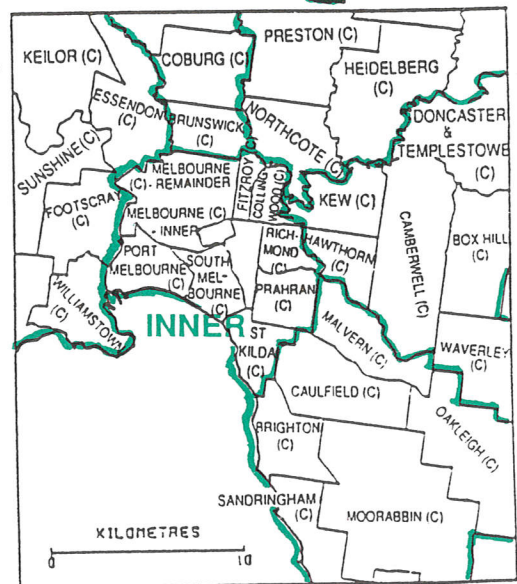
# MELBOURNE STATISTICAL DIVISION

## Statistical Local Areas LABOUR FORCE REGIONS

effective 1 January 1991

City (C) Shire (S)

© Commonwealth of Australia 1992





## For more information ...

The ABS publishes a wide range of statistics and other information on Australia's economic and social conditions. Details of what is available in various publications and other products can be found in the *ABS Catalogue of Publications and Products* available at all ABS Offices (see below for contact details).

### Information Consultancy Service

Information tailored to special needs of clients can be obtained from the Information Consultancy Service available at ABS Offices (see Information Inquiries below for contact details).

### Electronic Data Services

A wide range of our data is available on electronic media. Selections of the most frequently requested data are available, updated daily, on DISCOVERY (Key \*656#). The ABS PC-TELESTATS service delivers major economic indicator publications ready to download into personal computers on the day of release. The PC-AUSSTATS service enables on-line access to a data base of thousands of up-to-date time series. Selected datasets are also available on diskette or CD-ROM. For more details on electronic data services available, contact Information Services in any of the ABS Offices (see Information Inquiries below for contact details).

### Bookshops and Subscriptions

There are over 500 titles of various publications available from ABS Bookshops in all ABS Offices (see below Bookshop Sales for contact details). The ABS also provides a subscription service through which nominated publications are provided by mail on a regular basis at no additional cost (telephone Publications Subscription Service toll free on 008 02 0608 Australia wide).

## Sales and Inquiries

		<i>Information Inquiries</i>	<i>Bookshop Sales</i>
<b>Regional Offices</b>			
SYDNEY	(02)	268 4611	268 4620
MELBOURNE	(03)	615 7000	615 7829
BRISBANE	(07)	222 6351	222 6350
PERTH	(09)	323 5140	323 5307
ADELAIDE	(08)	237 7100	237 7582
HOBART	(002)	205 800	205 800
CANBERRA	(06)	252 5979	252 6007
DARWIN	(089)	432 111	432 111
<b>National Office</b>			
ACT	(06)	252 5249	252 6627



Information Services, ABS, PO Box 10, Belconnen ACT 2616  
or any ABS State office.

